

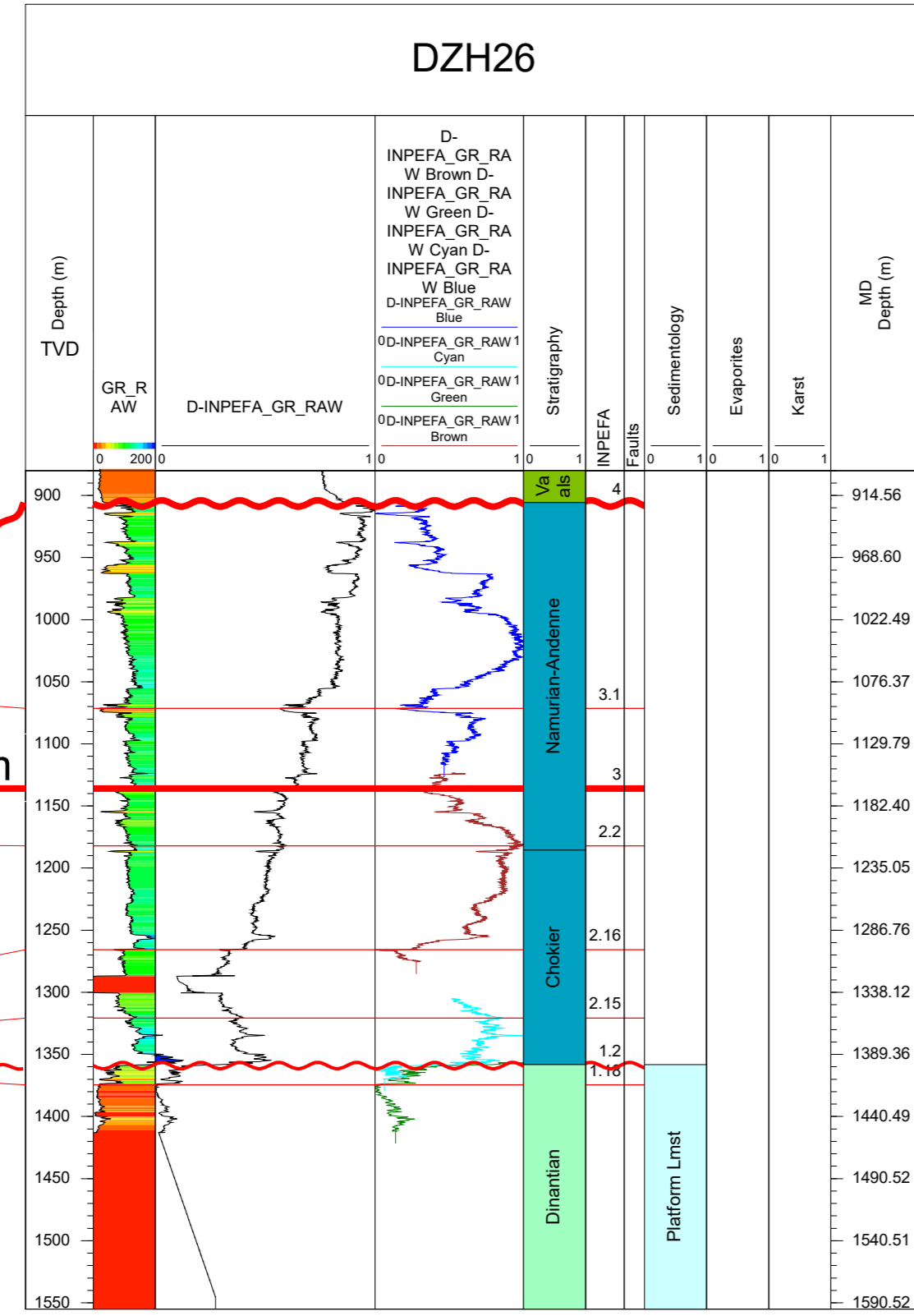
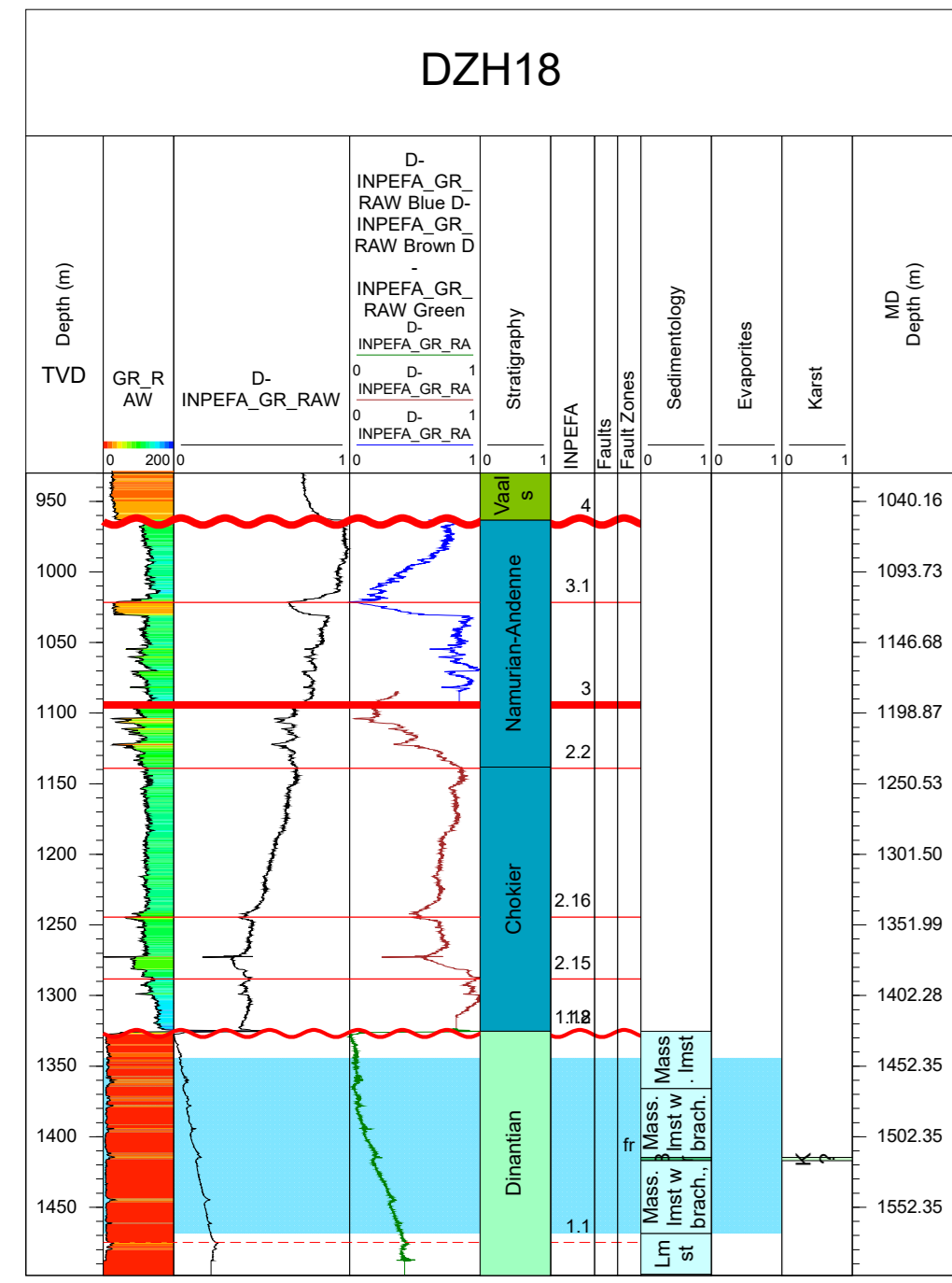
Sedimentology, Evaporites, Karst	
Light blue	Limestone
Light green	Shallow water to continental deposits with paleosols
Dark blue	Reworked limestone
Light blue	Open marine limestone
Light green	Mud-supported limestone
Light blue	Grain-supported shallow water limestone
Light purple	Boundstone inter-/subtidal
Dark purple	Boundstone distal mound
Orange	Marl/Marly limestone
Dark orange	Claystone/Shale
Yellow	Dolostone/Dolomitized limestone
Light yellow	Silicified carbonate
Yellow	Sandstone
Light green	Breccia/Conglomerate
Light green	Possible Karst
Dark green	Karst
Light pink	Possible Evaporite (or proxy)
Red	Evaporite (or proxy)

Stratigraphy	
Light green	Cretaceous
Light blue	Westphalian (Carboniferous)
Dark blue	Namurian (Carboniferous)
Light blue	Dinantian (Carboniferous)
Light green	Warnantian/Livian – Dinantian (Carboniferous)
Light green	Molinnian – Dinantian (Carboniferous)
Light green	Tournaisian – Dinantian (Carboniferous)
Dark green	Devonian

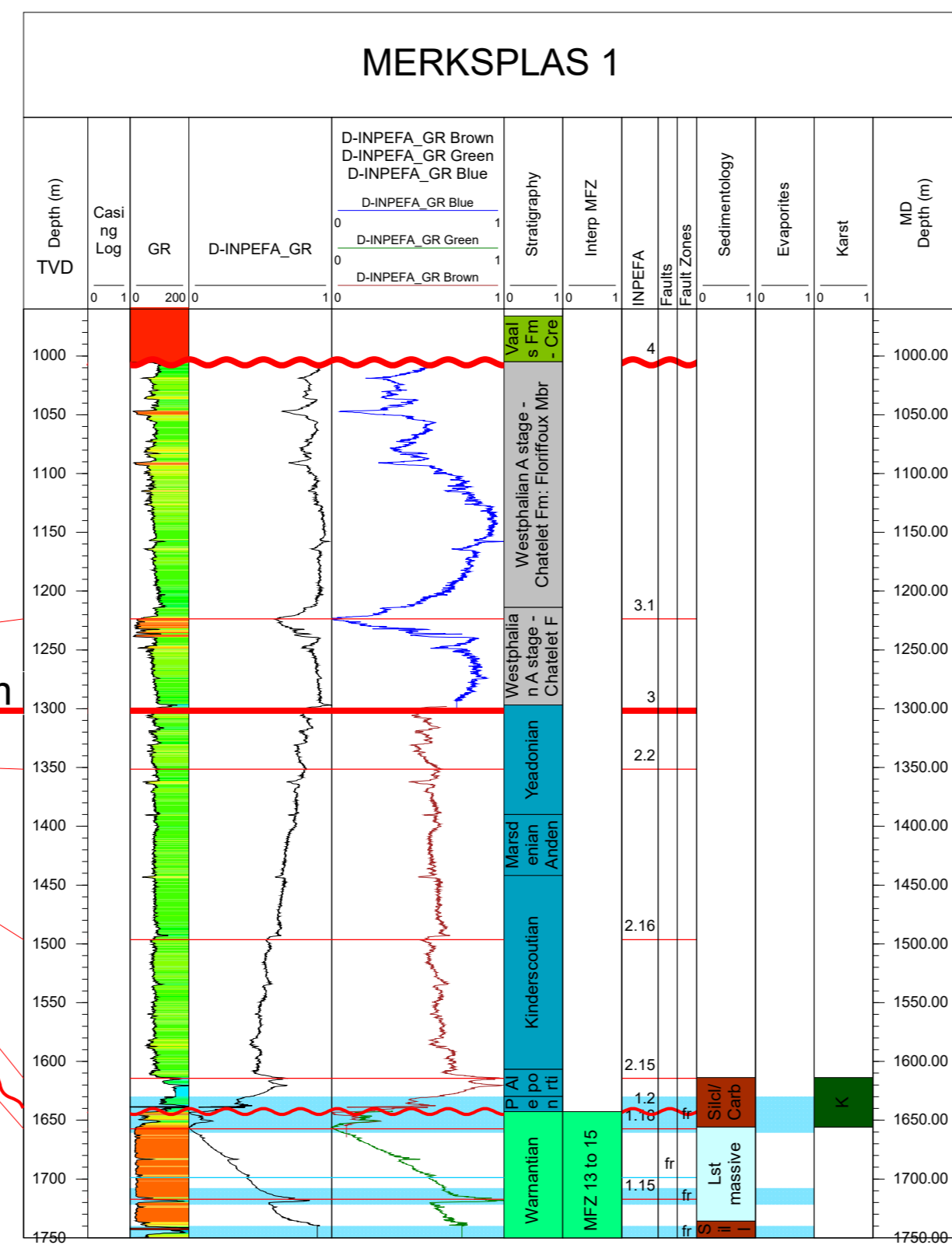
Faults, Fault Zones	
Blue line	Fault
Dashed blue line	Fault (uncertain)
Blue shaded area	Fault zone
Light blue shaded area	Fault zone (uncertain)
Light blue shaded area	Fractured zone

INPEFA	
Red line	Break
Dashed red line	Break (uncertain)
Red wavy line	Break, erosional surface
Red wavy line	Break, erosional surface (uncertain)

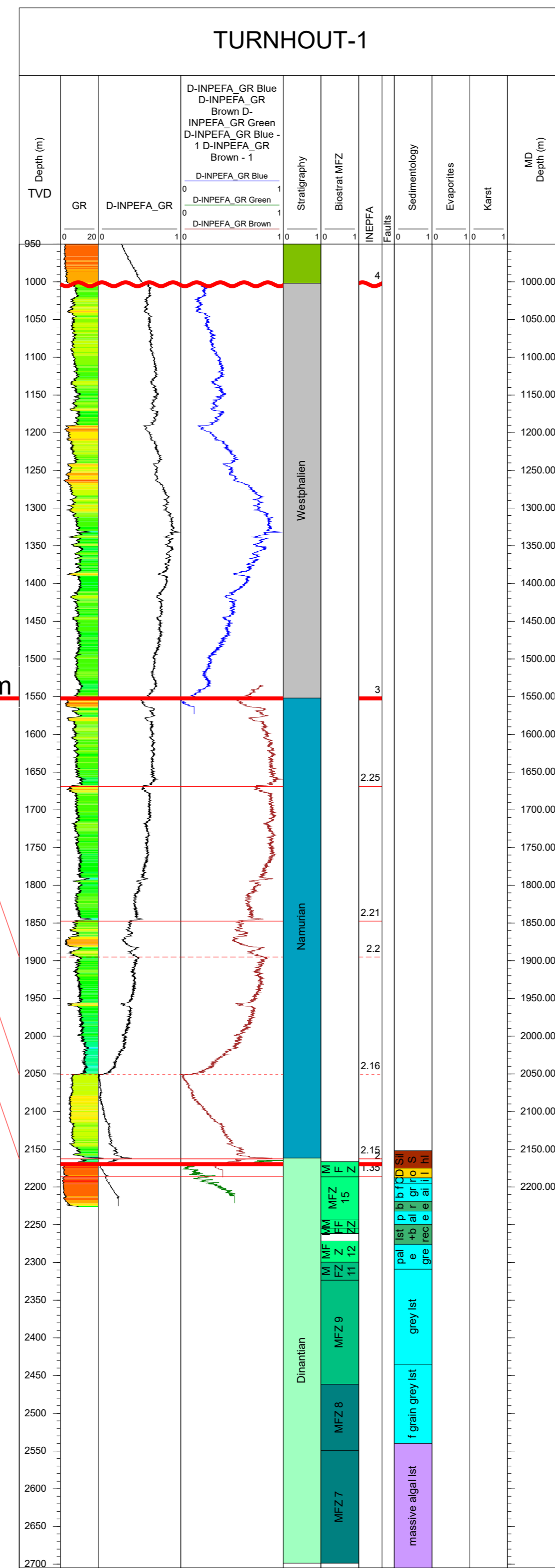
NW



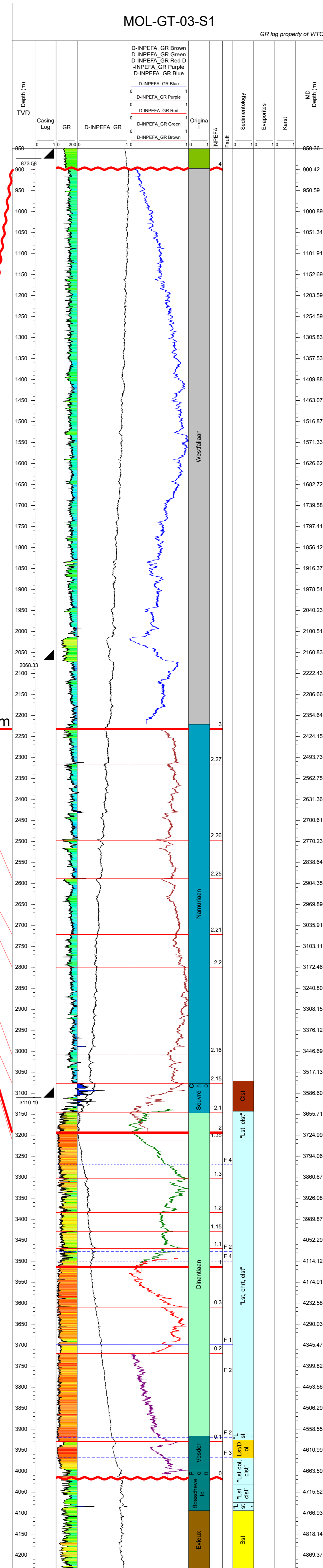
3 km



6 km

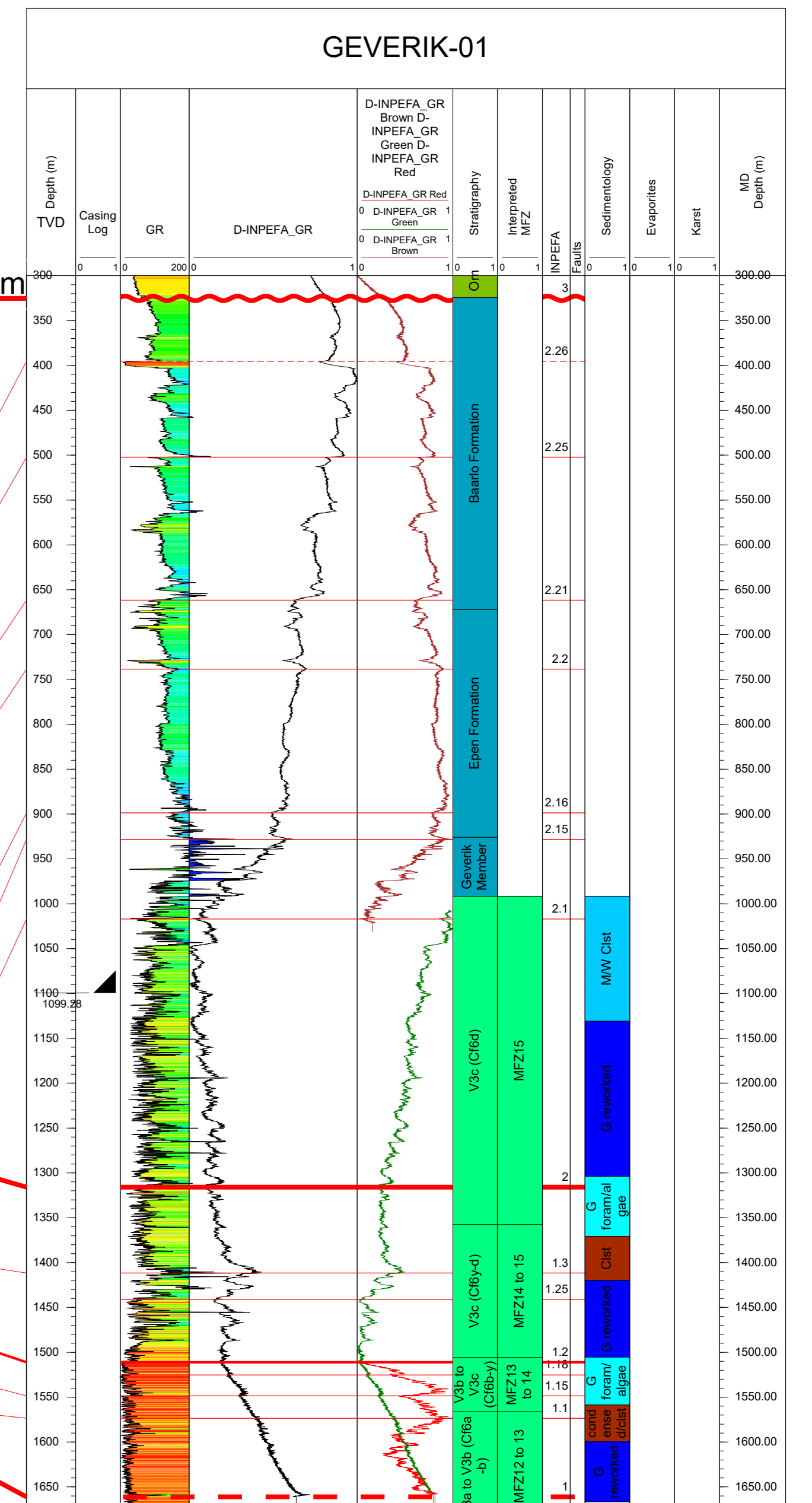


9 km



15 km

SE



58 km

