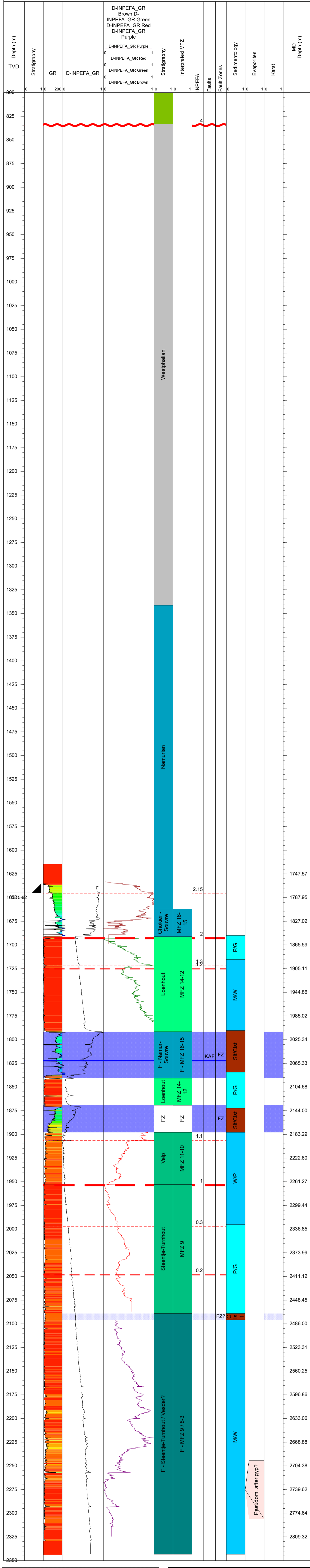


BEERSE-GT-01



Sedimentology, Evaporites, Karst	
 	Limestone
 	Shallow water to continental deposits with paleosoils
 	Reworked limestone
 	Open marine limestone
 	Mud-supported limestone
 	Grain-supported shallow water limestone
 	Boundstone inter-/subtidal
 	Boundstone distal mound
 	Marl/Marly limestone
 	Claystone/Shale
 	Dolostone/Dolomitized limestone
 	Silicified carbonate
 	Sandstone
 	Breccia/Conglomerate
 	Possible Karst
 	Karst
 	Possible Evaporite (or proxy)
 	Evaporite (or proxy)

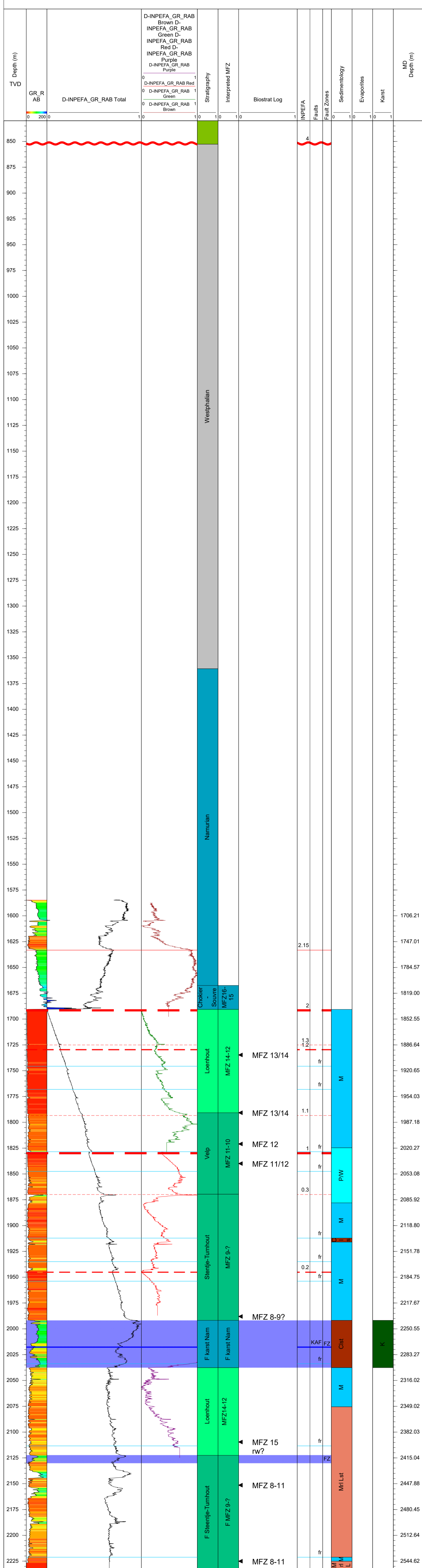
Stratigraphy	
 	Cretaceous
 	Westphalian (Carboniferous)
 	Namurian (Carboniferous)
 	Dinantian (Carboniferous)
 	Warnantian/Livian – Dinantian (Carboniferous)
 	Moliniacian – Dinantian (Carboniferous)
 	Tournaisian – Dinantian (Carboniferous)
 	Devonian

Faults, Fault Zones	
 	Fault
 	Fault (uncertain)
 	Fault zone
 	Fault zone (uncertain)
 	Fractured zone

INPEFA	
 	Break
 	Break (uncertain)
 	Break, erosional surface
 	Break, erosional surface (uncertain)



BEERSE-GT-01a



Sedimentology, Evaporites, Karst	
[Light Blue]	Limestone
[Light Green]	Shallow water to continental deposits with paleosoils
[Dark Blue]	Reworked limestone
[Medium Blue]	Open marine limestone
[Cyan]	Mud-supported limestone
[Light Cyan]	Grain-supported shallow water limestone
[Purple]	Boundstone inter-/subtidal
[Brown]	Boundstone distal mound
[Orange]	Marl/Marly limestone
[Dark Brown]	Claystone/Shale
[Yellow]	Dolostone/Dolomitized limestone
[Grey]	Silicified carbonate
[Light Yellow]	Sandstone
[Green]	Breccia/Conglomerate
[Light Green]	Possible Karst
[Dark Green]	Karst
[Pink]	Possible Evaporite (or proxy)
[Red]	Evaporite (or proxy)

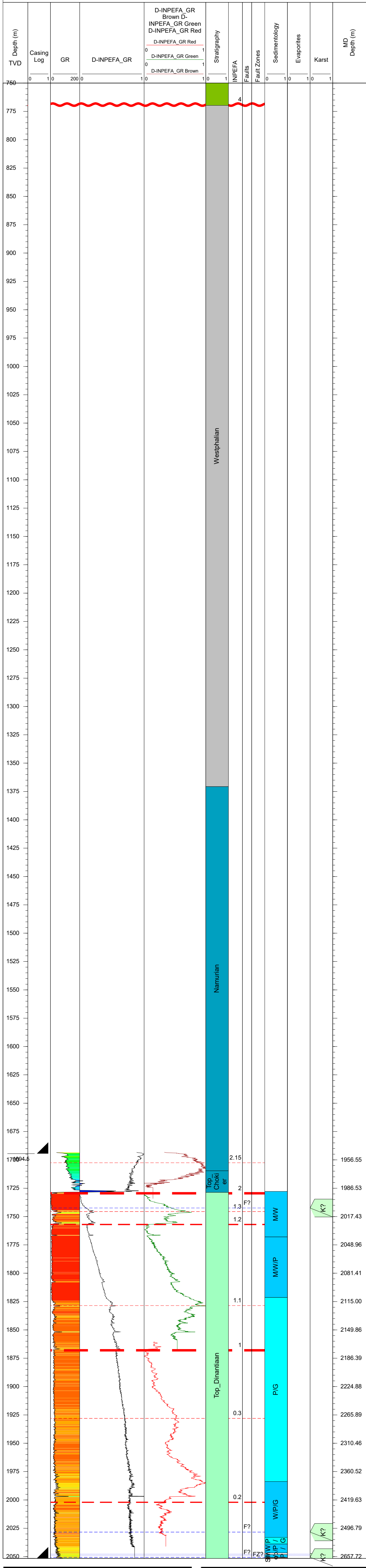
Stratigraphy	
[Light Green]	Cretaceous
[Grey]	Westphalian (Carboniferous)
[Blue]	Namurian (Carboniferous)
[Light Green]	Dinantian (Carboniferous)
[Green]	Warnantian – Dinantian (Carboniferous)
[Light Green]	Molinnian – Dinantian (Carboniferous)
[Dark Green]	Moulinian – Dinantian (Carboniferous)
[Brown]	Devonian

Faults, Fault Zones	
[Solid Blue Line]	Fault
[Dashed Blue Line]	Fault (uncertain)
[Light Blue Box]	Fault zone
[Lighter Blue Box]	Fault zone (uncertain)
[Lightest Blue Box]	Fractured zone

INPEFA	
[Red Line]	Break
[Dashed Red Line]	Break (uncertain)
[Red Wavy Line]	Break, erosional surface
[Red Wavy Dashed Line]	Break, erosional surface (uncertain)



BEERSE-GT-02



Sedimentology, Evaporites, Karst	
[Light Blue]	Limestone
[Light Green]	Shallow water to continental deposits with paleosoils
[Dark Blue]	Reworked limestone
[Medium Blue]	Open marine limestone
[Light Blue]	Mud-supported limestone
[Cyan]	Grain-supported shallow water limestone
[Purple]	Boundstone inter-/subtidal
[Dark Purple]	Boundstone distal mound
[Brown]	Marl/Marly limestone
[Dark Brown]	Claystone/Shale
[Yellow]	Dolostone/Dolomitized limestone
[Grey]	Silicified carbonate
[Yellow]	Sandstone
[Green]	Breccia/Conglomerate
[Light Green]	Possible Karst
[Dark Green]	Karst
[Pink]	Possible Evaporite (or proxy)
[Red]	Evaporite (or proxy)

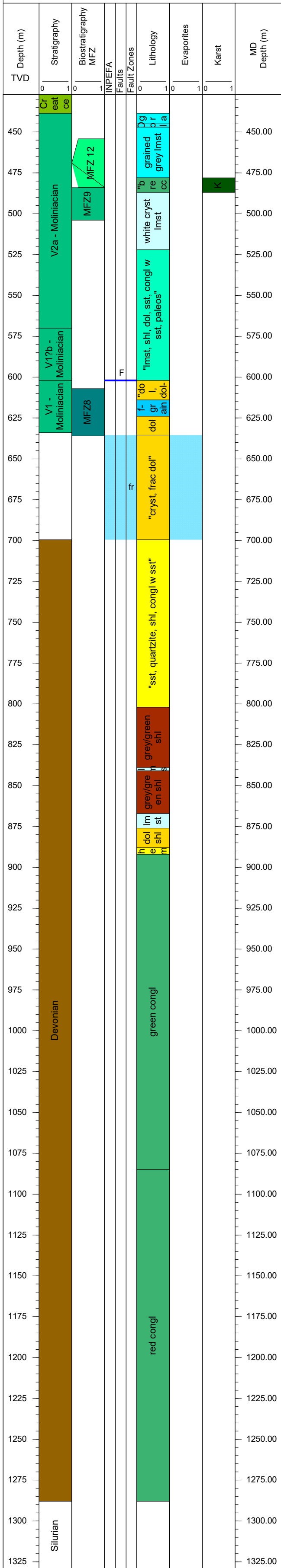
Stratigraphy	
[Green]	Cretaceous
[Grey]	Westphalian (Carboniferous)
[Blue]	Namurian (Carboniferous)
[Light Green]	Dinantian (Carboniferous)
[Dark Green]	Warnantian/Livian – Dinantian (Carboniferous)
[Medium Green]	Molinnician – Dinantian (Carboniferous)
[Dark Blue]	Tournaisian – Dinantian (Carboniferous)
[Brown]	Devonian

Faults, Fault Zones	
[Blue Line]	Fault
[Dashed Blue Line]	Fault (uncertain)
[Blue Shaded Area]	Fault zone
[Light Blue Shaded Area]	Fault zone (uncertain)
[Cyan Shaded Area]	Fractured zone

INPEFA	
[Red Line]	Break
[Dashed Red Line]	Break (uncertain)
[Red Wavy Line]	Break, erosional surface
[Red Dashed Wavy Line]	Break, erosional surface (uncertain)



Booischt



Sedimentology, Evaporites, Karst	
	Limestone
	Shallow water to continental deposits with paleosoils
	Reworked limestone
	Open marine limestone
	Mud-supported limestone
	Grain-supported shallow water limestone
	Boundstone inter-/subtidal
	Boundstone distal mound
	Marl/Marly limestone
	Claystone/Shale
	Dolostone/Dolomitized limestone
	Silicified carbonate
	Sandstone
	Breccia/Conglomerate
	Possible Karst
	Karst
	Possible Evaporite (or proxy)
	Evaporite (or proxy)

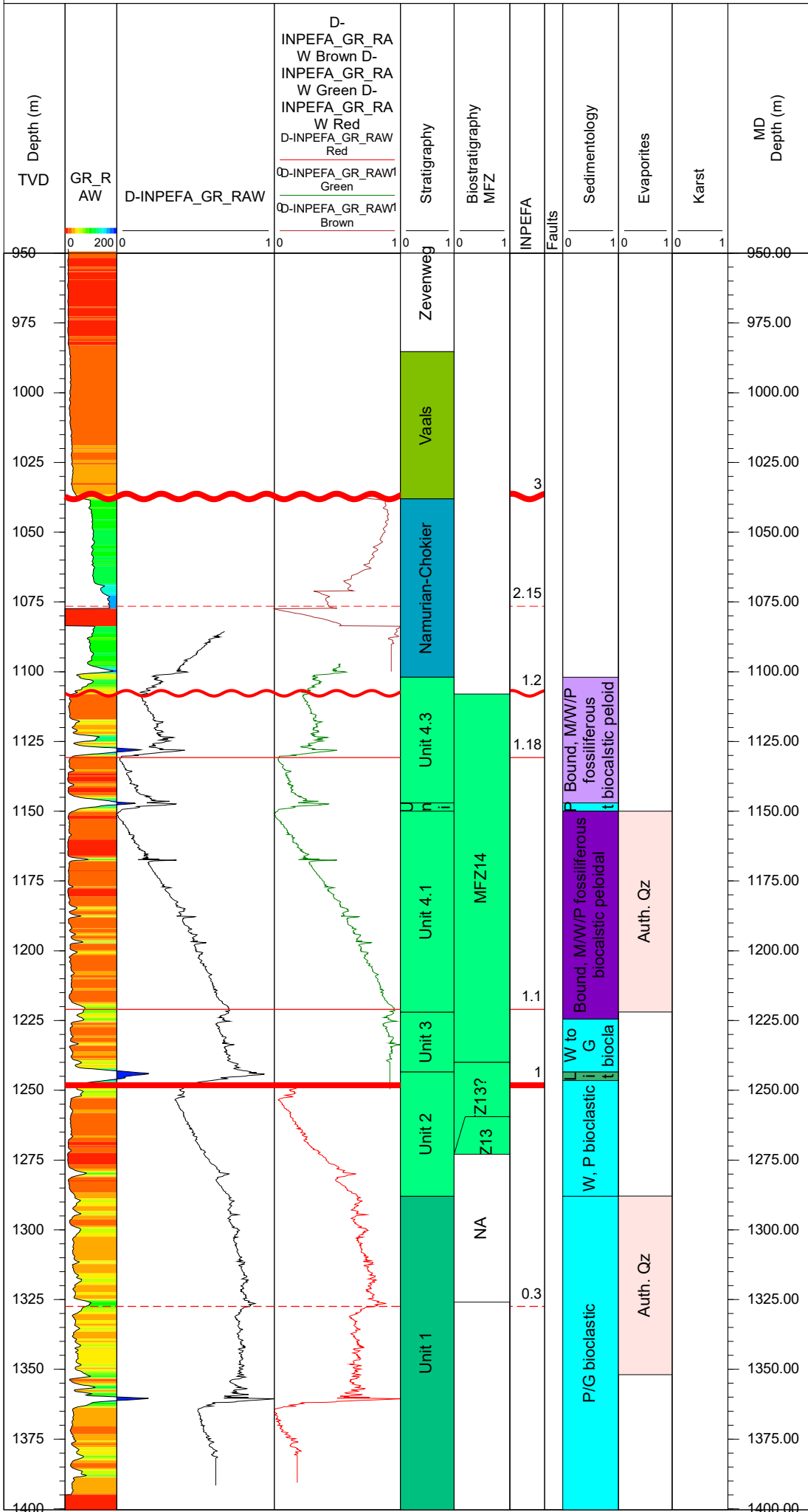
INPEFA	
	Break
	Break (uncertain)
	Break, erosional surface
	Break, erosional surface (uncertain)

Stratigraphy	
	Cretaceous
	Westphalian (Carboniferous)
	Namurian (Carboniferous)
	Dinantian (Carboniferous)
	Warnantian/Livian – Dinantian (Carboniferous)
	Moliniacian – Dinantian (Carboniferous)
	Tournaisian – Dinantian (Carboniferous)
	Devonian

Faults, Fault Zones	
	Fault
	Fault (uncertain)
	Fault zone
	Fault zone (uncertain)
	Fractured zone



DZH1



Sedimentology, Evaporites, Karst	
	Limestone
	Shallow water to continental deposits with paleosoils
	Reworked limestone
	Open marine limestone
	Mud-supported limestone
	Grain-supported shallow water limestone
	Boundstone inter-/subtidal
	Boundstone distal mound
	Marl/Marly limestone
	Claystone/Shale
	Dolostone/Dolomitized limestone
	Silicified carbonate
	Sandstone
	Breccia/Conglomerate
	Possible Karst
	Karst
	Possible Evaporite (or proxy)
	Evaporite (or proxy)

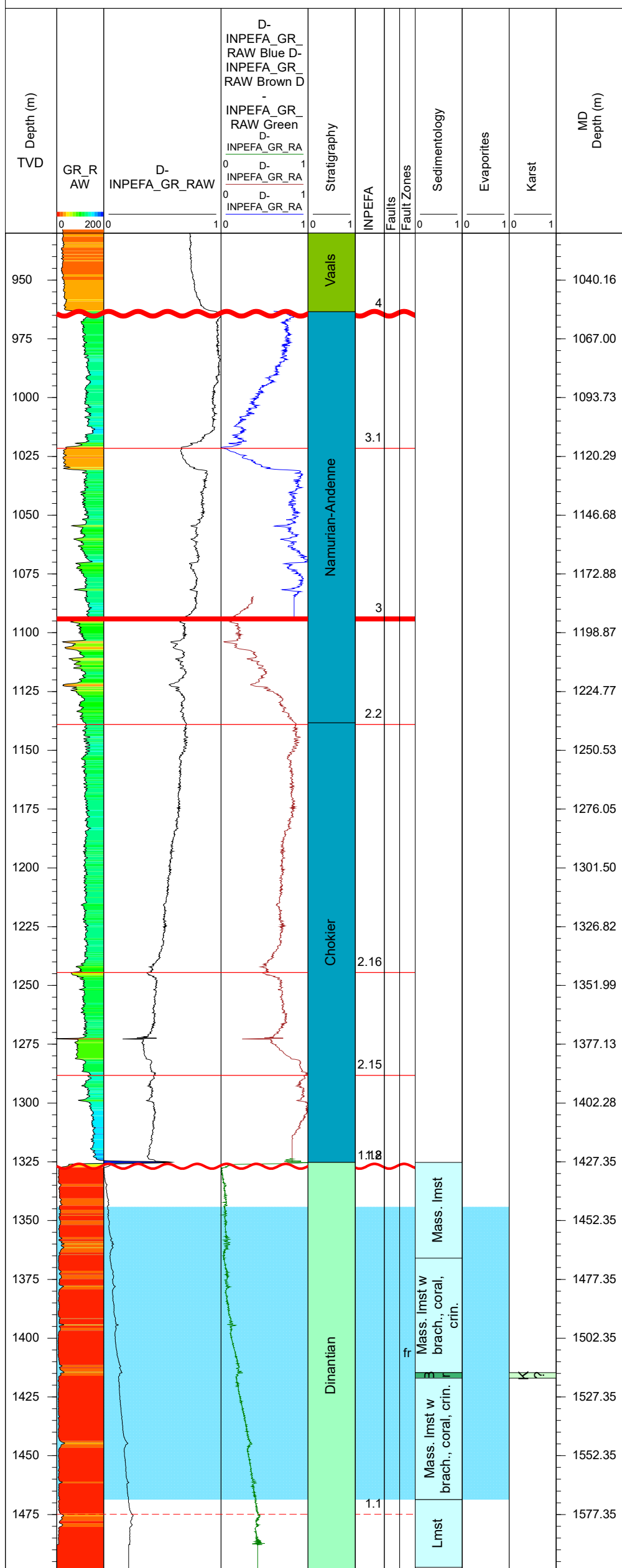
Stratigraphy	
	Cretaceous
	Westphalian (Carboniferous)
	Namurian (Carboniferous)
	Dinantian (Carboniferous)
	Warnantian/Livian – Dinantian (Carboniferous)
	Moliniacian – Dinantian (Carboniferous)
	Tournaisian – Dinantian (Carboniferous)
	Devonian

Faults, Fault Zones	
	Fault
	Fault (uncertain)
	Fault zone
	Fault zone (uncertain)
	Fractured zone

INPEFA	
	Break
	Break (uncertain)
	Break, erosional surface
	Break, erosional surface (uncertain)



DZH18



Sedimentology, Evaporites, Karst	
Limestone	
Shallow water to continental deposits with paleosoils	
Reworked limestone	
Open marine limestone	
Mud-supported limestone	
Grain-supported shallow water limestone	
Boundstone inter-/subtidal	
Boundstone distal mound	
Marl/Marly limestone	
Claystone/Shale	
Dolostone/Dolomitized limestone	
Silicified carbonate	
Sandstone	
Breccia/Conglomerate	
Possible Karst	
Karst	
Possible Evaporite (or proxy)	
Evaporite (or proxy)	

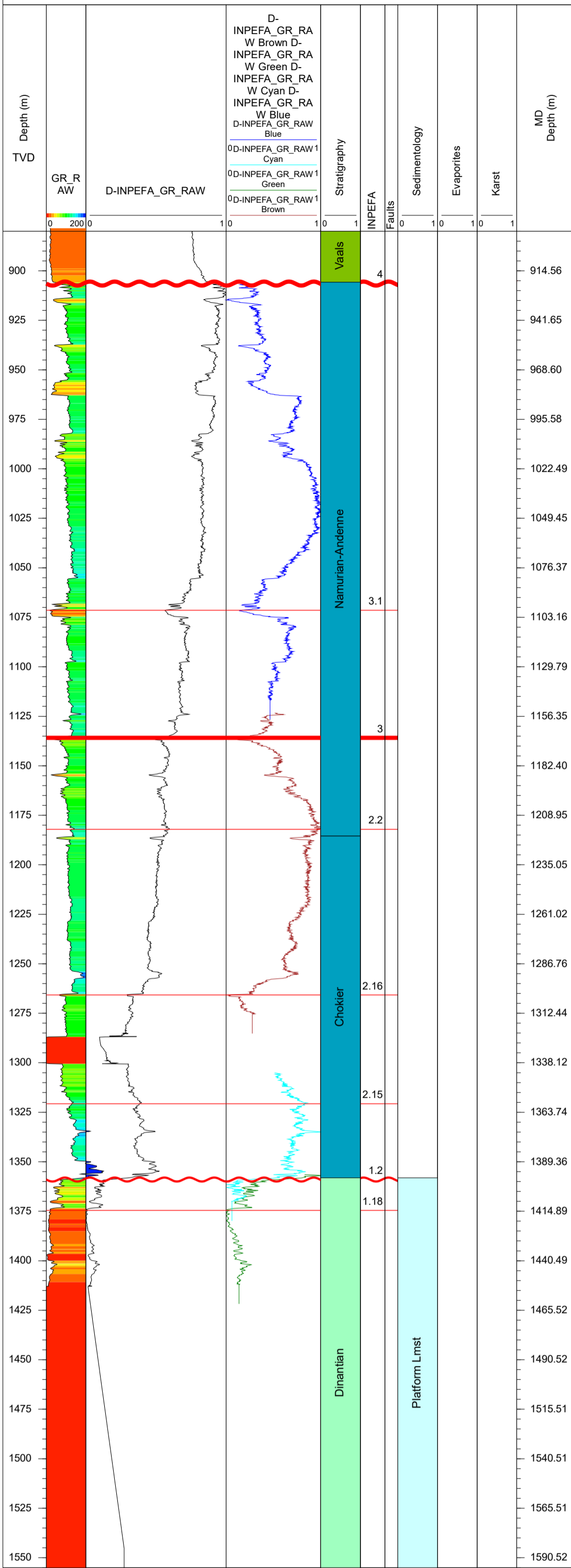
Stratigraphy	
Cretaceous	
Westphalian (Carboniferous)	
Namurian (Carboniferous)	
Dinantian (Carboniferous)	
Warnantian/Livian – Dinantian (Carboniferous)	
Moliniacian – Dinantian (Carboniferous)	
Tournaisian – Dinantian (Carboniferous)	
Devonian	

Faults, Fault Zones	
Fault	
Fault (uncertain)	
Fault zone	
Fault zone (uncertain)	
Fractured zone	

INPEFA	
Break	
Break (uncertain)	
Break, erosional surface	
Break, erosional surface (uncertain)	



DZH26



Sedimentology, Evaporites, Karst	
[Light Blue]	Limestone
[Cyan]	Shallow water to continental deposits with paleosoils
[Dark Blue]	Reworked limestone
[Blue]	Open marine limestone
[Light Blue]	Mud-supported limestone
[Cyan]	Grain-supported shallow water limestone
[Purple]	Boundstone inter-/subtidal
[Dark Purple]	Boundstone distal mound
[Brown]	Marl/Marly limestone
[Dark Brown]	Claystone/Shale
[Yellow]	Dolostone/Dolomitized limestone
[Grey]	Silicified carbonate
[Yellow]	Sandstone
[Green]	Breccia/Conglomerate
[Light Green]	Possible Karst
[Dark Green]	Karst
[Pink]	Possible Evaporite (or proxy)
[Red]	Evaporite (or proxy)

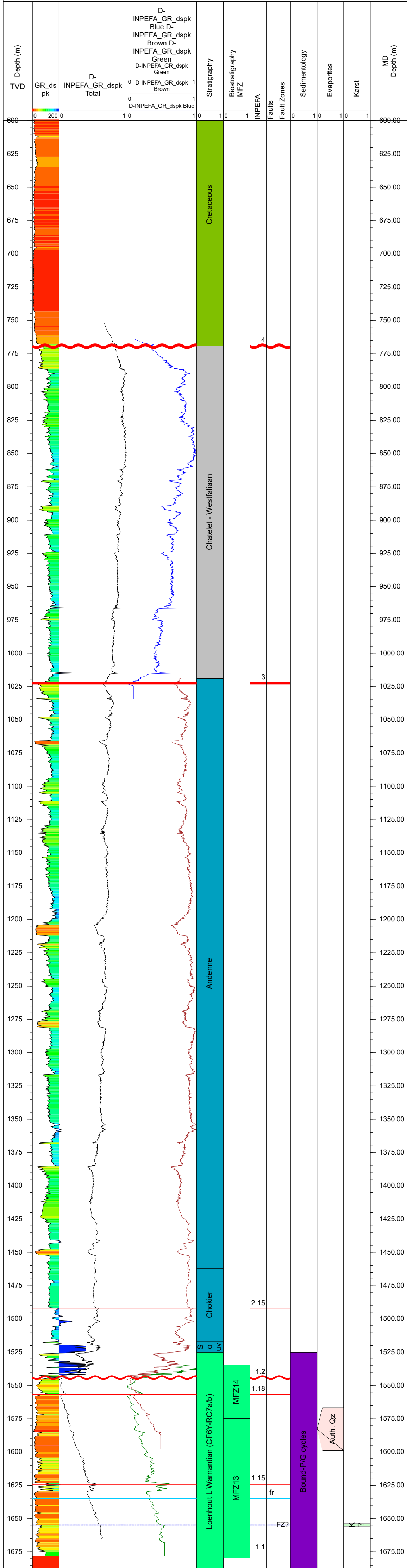
Stratigraphy	
[Green]	Cretaceous
[Grey]	Westphalian (Carboniferous)
[Blue]	Namurian (Carboniferous)
[Light Green]	Dinantian (Carboniferous)
[Cyan]	Warnantian/Livian – Dinantian (Carboniferous)
[Green]	Moliniacian – Dinantian (Carboniferous)
[Dark Green]	Tournaisian – Dinantian (Carboniferous)
[Brown]	Devonian

Faults, Fault Zones	
[Blue]	Fault
[Dashed Blue]	Fault (uncertain)
[Light Blue]	Fault zone
[Lighter Light Blue]	Fault zone (uncertain)
[Cyan]	Fractured zone

INPEFA	
[Red]	Break
[Dashed Red]	Break (uncertain)
[Wavy Red]	Break, erosional surface
[Dashed Wavy Red]	Break, erosional surface (uncertain)



DZP1



Sedimentology, Evaporites, Karst	
[Light Blue]	Limestone
[Light Green]	Shallow water to continental deposits with paleosoils
[Dark Blue]	Reworked limestone
[Medium Blue]	Open marine limestone
[Light Blue]	Mud-supported limestone
[Cyan]	Grain-supported shallow water limestone
[Purple]	Boundstone inter-/subtidal
[Dark Purple]	Boundstone distal mound
[Brown]	Marl/Marly limestone
[Dark Brown]	Claystone/Shale
[Yellow]	Dolostone/Dolomitized limestone
[Grey]	Silicified carbonate
[Light Yellow]	Sandstone
[Green]	Breccia/Conglomerate
[Light Green]	Possible Karst
[Dark Green]	Karst
[Pink]	Possible Evaporite (or proxy)
[Red]	Evaporite (or proxy)

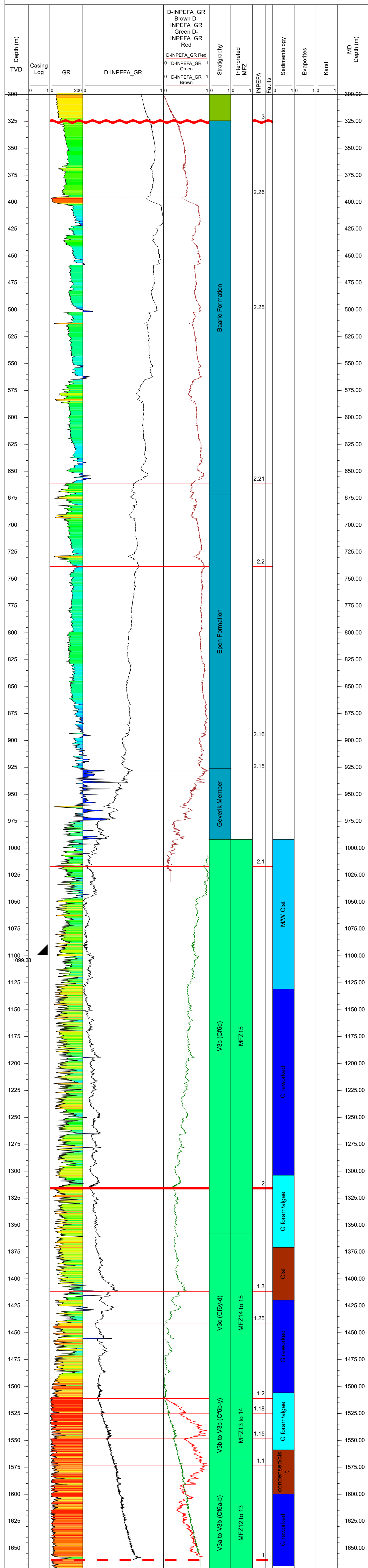
Stratigraphy	
[Light Green]	Cretaceous
[Grey]	Westphalian (Carboniferous)
[Blue]	Namurian (Carboniferous)
[Light Green]	Dinantian (Carboniferous)
[Green]	Warnantian/Livian – Dinantian (Carboniferous)
[Dark Green]	Molnisiacian – Dinantian (Carboniferous)
[Dark Blue]	Tournaisian – Dinantian (Carboniferous)
[Brown]	Devonian

Faults, Fault Zones	
[Blue line]	Fault
[Dashed blue line]	Fault (uncertain)
[Light Blue shaded]	Fault zone
[Lighter blue shaded]	Fault zone (uncertain)
[Cyan shaded]	Fractured zone

INPEFA	
[Red line]	Break
[Dashed red line]	Break (uncertain)
[Red wavy line]	Break, erosional surface
[Red dashed wavy line]	Break, erosional surface (uncertain)



GEVERIK-01



Sedimentology, Evaporites, Karst	
[Light Blue]	Limestone
[Light Green]	Shallow water to continental deposits with paleosoils
[Dark Blue]	Reworked limestone
[Medium Blue]	Open marine limestone
[Light Blue]	Mud-supported limestone
[Cyan]	Grain-supported shallow water limestone
[Purple]	Boundstone inter-/subtidal
[Dark Purple]	Boundstone distal mound
[Brown]	Marl/Marly limestone
[Dark Brown]	Claystone/Shale
[Yellow]	Dolostone/Dolomitized limestone
[Grey]	Silicified carbonate
[Yellow]	Sandstone
[Green]	Breccia/Conglomerate
[Light Green]	Possible Karst
[Dark Green]	Karst
[Pink]	Possible Evaporite (or proxy)
[Red]	Evaporite (or proxy)

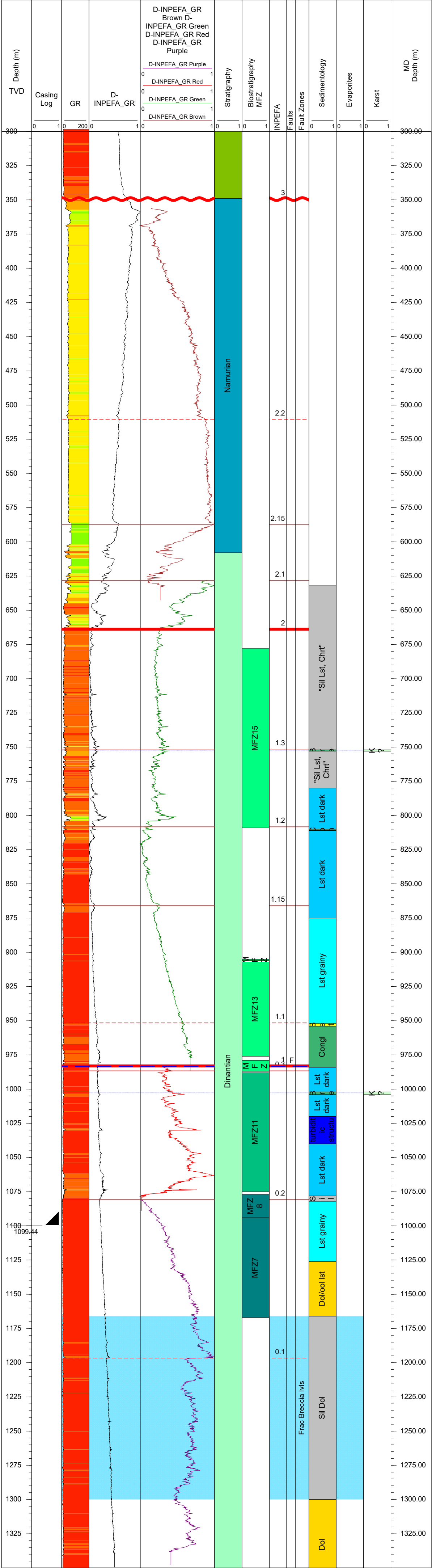
INPEFA	
[Red Line]	Break
[Dashed Red Line]	Break (uncertain)
[Red Wavy Line]	Break, erosional surface
[Red Dashed Wavy Line]	Break, erosional surface (uncertain)

Stratigraphy	
[Green]	Cretaceous
[Grey]	Westphalian (Carboniferous)
[Blue]	Namurian (Carboniferous)
[Light Green]	Dinantian (Carboniferous)
[Dark Green]	Warnantian/Livian – Dinantian (Carboniferous)
[Teal]	Molinician – Dinantian (Carboniferous)
[Dark Teal]	Tournaisian – Dinantian (Carboniferous)
[Brown]	Devonian

Faults, Fault Zones	
[Blue Line]	Fault
[Dashed Blue Line]	Fault (uncertain)
[Light Blue Box]	Fault zone
[Lighter Blue Box]	Fault zone (uncertain)
[Cyan Box]	Fractured zone



HALEN (KB-131)



Sedimentology, Evaporites, Karst	
[Light Blue]	Limestone
[Cyan]	Shallow water to continental deposits with paleosols
[Dark Blue]	Reworked limestone
[Blue]	Open marine limestone
[Light Blue]	Mud-supported limestone
[Cyan]	Grain-supported shallow water limestone
[Purple]	Boundstone inter-/subtidal
[Dark Purple]	Boundstone distal mound
[Brown]	Marl/Marly limestone
[Dark Brown]	Claystone/Shale
[Yellow]	Dolostone/Dolomitized limestone
[Grey]	Silicified carbonate
[Yellow]	Sandstone
[Green]	Breccia/Conglomerate
[Light Green]	Possible Karst
[Dark Green]	Karst
[Pink]	Possible Evaporite (or proxy)
[Red]	Evaporite (or proxy)

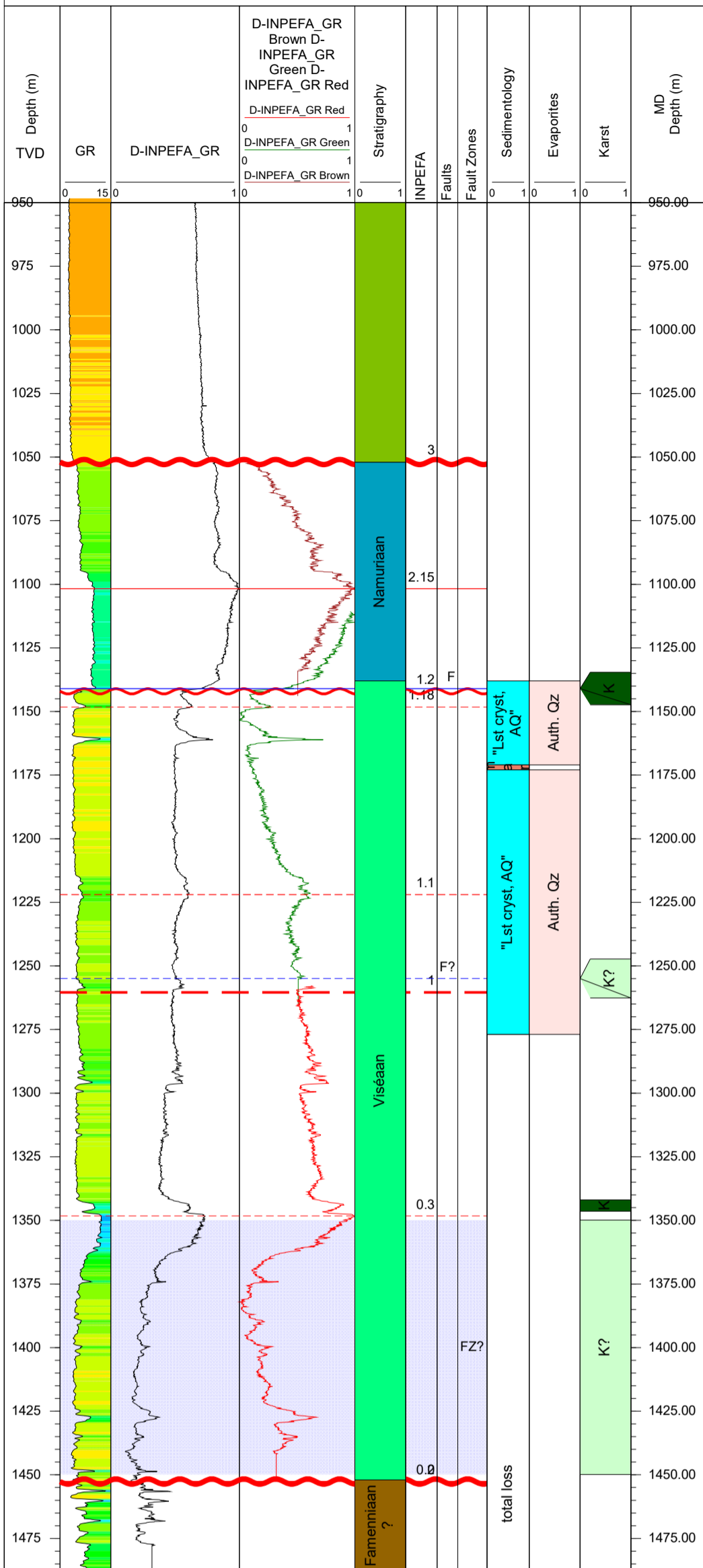
Stratigraphy	
[Green]	Cretaceous
[Grey]	Westphalian (Carboniferous)
[Blue]	Namurian (Carboniferous)
[Light Green]	Dinantian (Carboniferous)
[Cyan]	Warnian/Livian – Dinantian (Carboniferous)
[Dark Green]	Molnisiacian – Dinantian (Carboniferous)
[Dark Blue]	Tournaisian – Dinantian (Carboniferous)
[Brown]	Devonian

Faults, Fault Zones	
[Solid Blue Line]	Fault
[Dashed Blue Line]	Fault (uncertain)
[Shaded Blue Area]	Fault zone
[Light Blue Area]	Fault zone (uncertain)
[Light Blue Area]	Fractured zone

INPEFA	
[Red Line]	Break
[Dashed Red Line]	Break (uncertain)
[Red Wavy Line]	Break, erosional surface
[Red Wavy Dashed Line]	Break, erosional surface (uncertain)



HEIBAART 1BIS



Sedimentology, Evaporites, Karst	
	Limestone
	Shallow water to continental deposits with paleosoils
	Reworked limestone
	Open marine limestone
	Mud-supported limestone
	Grain-supported shallow water limestone
	Boundstone inter-/subtidal
	Boundstone distal mound
	Marl/Marly limestone
	Claystone/Shale
	Dolostone/Dolomitized limestone
	Silicified carbonate
	Sandstone
	Breccia/Conglomerate
	Possible Karst
	Karst
	Possible Evaporite (or proxy)
	Evaporite (or proxy)

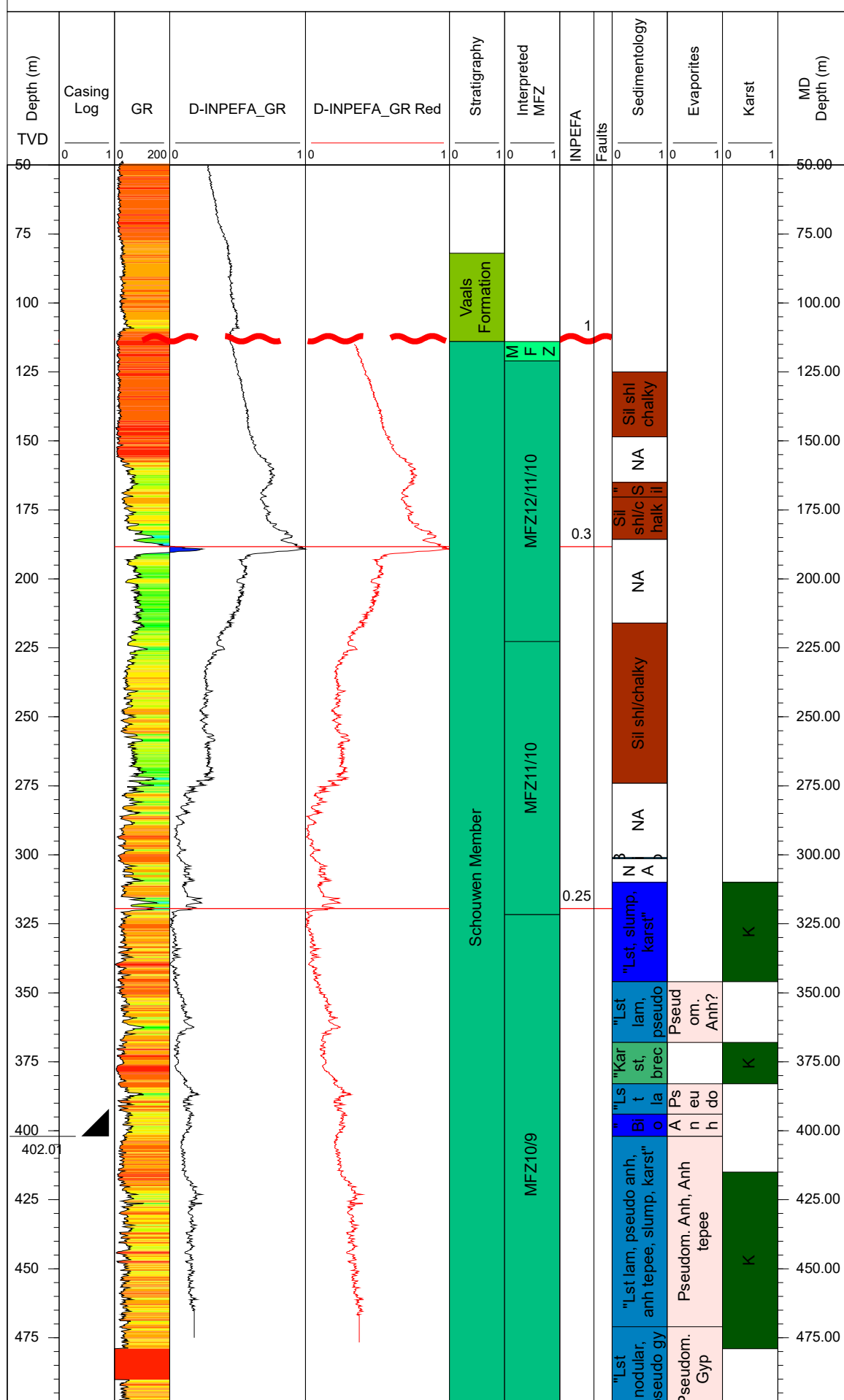
Stratigraphy	
	Cretaceous
	Westphalian (Carboniferous)
	Namurian (Carboniferous)
	Dinantian (Carboniferous)
	Warnantian/Livian – Dinantian (Carboniferous)
	Moliniacian – Dinantian (Carboniferous)
	Tournaisian – Dinantian (Carboniferous)
	Devonian

Faults, Fault Zones	
	Fault
	Fault (uncertain)
	Fault zone
	Fault zone (uncertain)
	Fractured zone

INPEFA	
	Break
	Break (uncertain)
	Break, erosional surface
	Break, erosional surface (uncertain)



HEUGEM-01-SIDETRACK1 (HEU-01-S1)



Sedimentology, Evaporites, Karst	
	Limestone
	Shallow water to continental deposits with paleosoils
	Reworked limestone
	Open marine limestone
	Mud-supported limestone
	Grain-supported shallow water limestone
	Boundstone inter-/subtidal
	Boundstone distal mound
	Marl/Marly limestone
	Claystone/Shale
	Dolostone/Dolomitized limestone
	Silicified carbonate
	Sandstone
	Breccia/Conglomerate
	Possible Karst
	Karst
	Possible Evaporite (or proxy)
	Evaporite (or proxy)

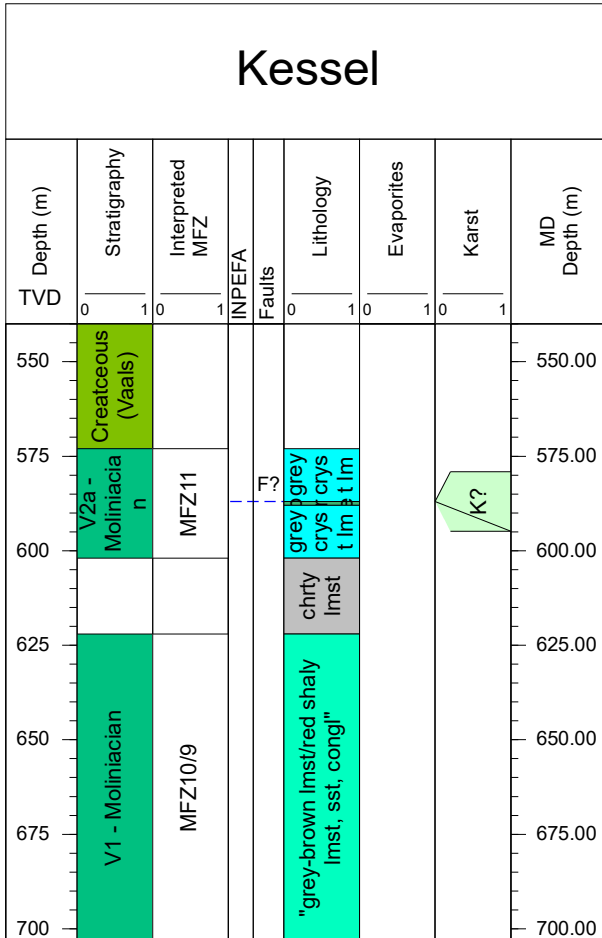
Stratigraphy	
	Cretaceous
	Westphalian (Carboniferous)
	Namurian (Carboniferous)
	Dinantian (Carboniferous)
	Warnantian/Livian – Dinantian (Carboniferous)
	Moliniacian – Dinantian (Carboniferous)
	Tournaisian – Dinantian (Carboniferous)
	Devonian

Faults, Fault Zones	
	Fault
	Fault (uncertain)
	Fault zone
	Fault zone (uncertain)
	Fractured zone

INPEFA	
	Break
	Break (uncertain)
	Break, erosional surface
	Break, erosional surface (uncertain)



Kessel



Sedimentology, Evaporites, Karst	
	Limestone
	Shallow water to continental deposits with paleosoils
	Reworked limestone
	Open marine limestone
	Mud-supported limestone
	Grain-supported shallow water limestone
	Boundstone inter-/subtidal
	Boundstone distal mound
	Marl/Marly limestone
	Claystone/Shale
	Dolostone/Dolomitized limestone
	Silicified carbonate
	Sandstone
	Breccia/Conglomerate
	Possible Karst
	Karst
	Possible Evaporite (or proxy)
	Evaporite (or proxy)

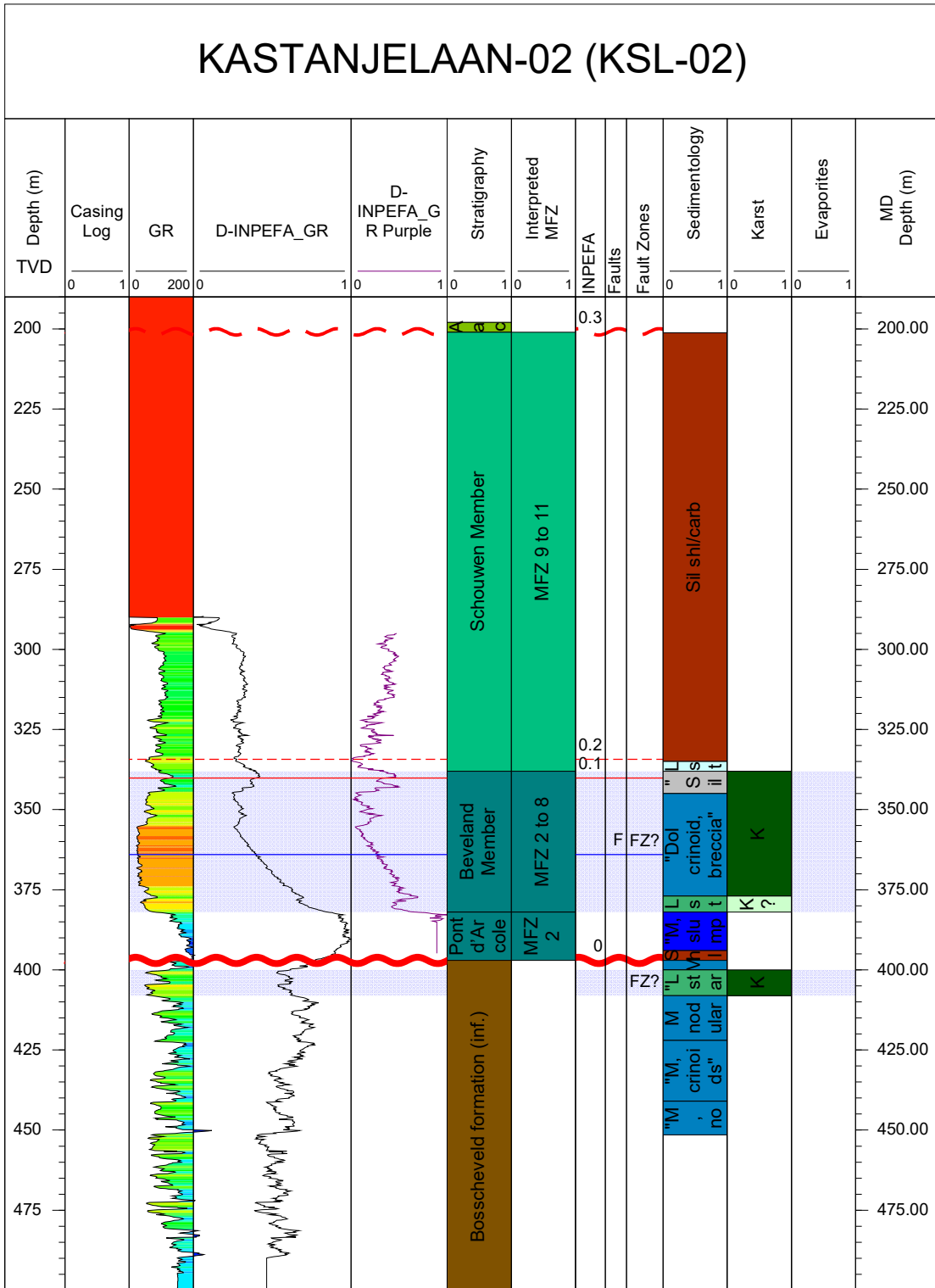
Stratigraphy	
	Cretaceous
	Westphalian (Carboniferous)
	Namurian (Carboniferous)
	Dinantian (Carboniferous)
	Warnantian/Livian – Dinantian (Carboniferous)
	Moliniacian – Dinantian (Carboniferous)
	Tournaisian – Dinantian (Carboniferous)
	Devonian

Faults, Fault Zones	
	Fault
	Fault (uncertain)
	Fault zone
	Fault zone (uncertain)
	Fractured zone

INPEFA	
	Break
	Break (uncertain)
	Break, erosional surface
	Break, erosional surface (uncertain)



KASTANJELAAN-02 (KSL-02)



Sedimentology, Evaporites, Karst	
	Limestone
	Shallow water to continental deposits with paleosoils
	Reworked limestone
	Open marine limestone
	Mud-supported limestone
	Grain-supported shallow water limestone
	Boundstone inter-/subtidal
	Boundstone distal mound
	Marl/Marly limestone
	Claystone/Shale
	Dolostone/Dolomitized limestone
	Silicified carbonate
	Sandstone
	Breccia/Conglomerate
	Possible Karst
	Karst
	Possible Evaporite (or proxy)
	Evaporite (or proxy)

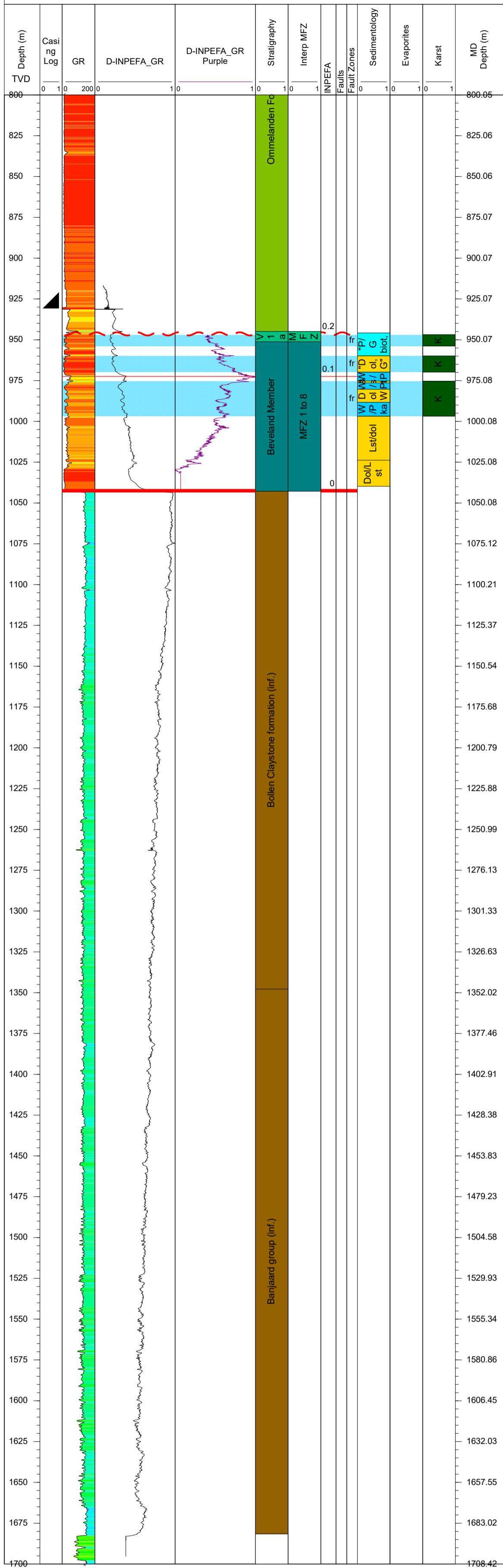
Stratigraphy	
	Cretaceous
	Westphalian (Carboniferous)
	Namurian (Carboniferous)
	Dinantian (Carboniferous)
	Warnantian/Livian – Dinantian (Carboniferous)
	Moliniacian – Dinantian (Carboniferous)
	Tournaisian – Dinantian (Carboniferous)
	Devonian

Faults, Fault Zones	
	Fault
	Fault (uncertain)
	Fault zone
	Fault zone (uncertain)
	Fractured zone

INPEFA	
	Break
	Break (uncertain)
	Break, erosional surface
	Break, erosional surface (uncertain)



KORTGENE-01



Sedimentology, Evaporites, Karst	
	Limestone
	Shallow water to continental deposits with paleosoils
	Reworked limestone
	Open marine limestone
	Mud-supported limestone
	Grain-supported shallow water limestone
	Boundstone inter-/subtidal
	Boundstone distal mound
	Marl/Marly limestone
	Claystone/Shale
	Dolostone/Dolomitized limestone
	Silicified carbonate
	Sandstone
	Breccia/Conglomerate
	Possible Karst
	Karst
	Possible Evaporite (or proxy)
	Evaporite (or proxy)

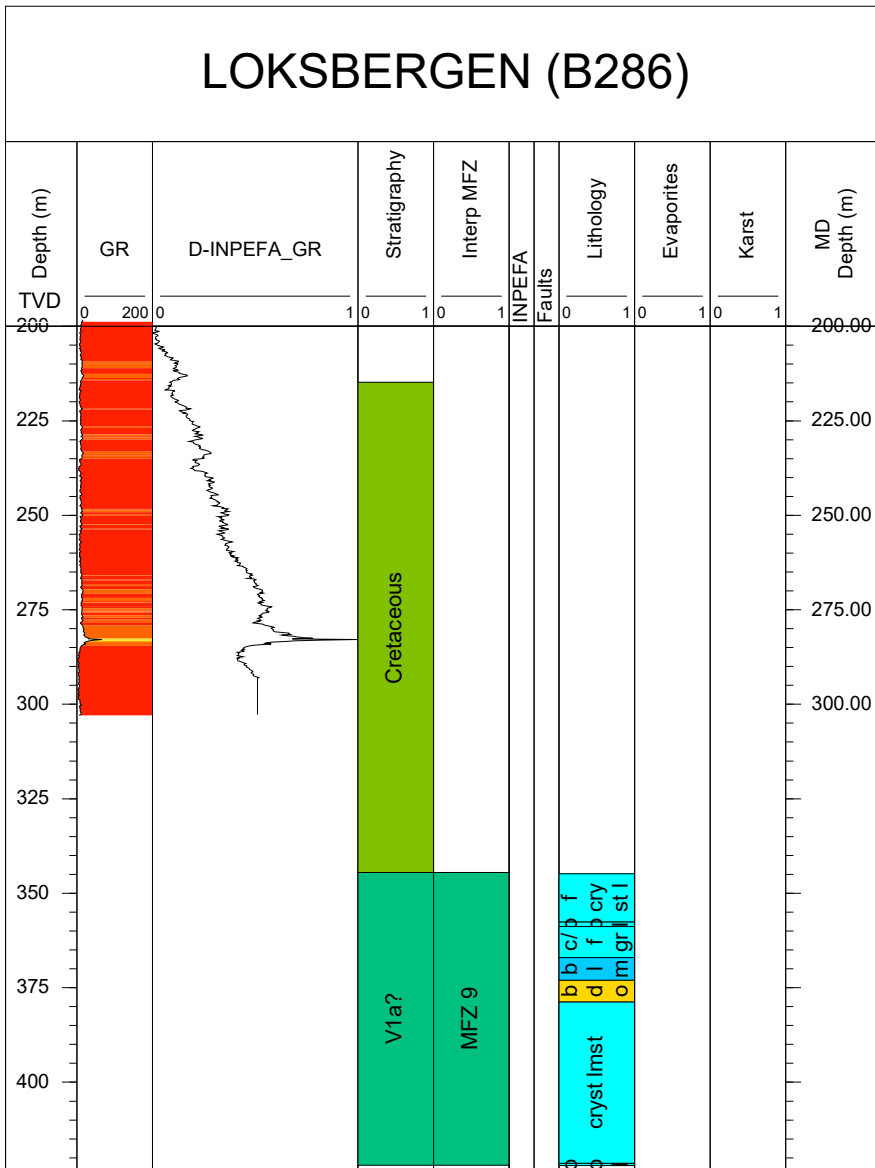
Stratigraphy	
	Cretaceous
	Westphalian (Carboniferous)
	Namurian (Carboniferous)
	Dinantian (Carboniferous)
	Warnantian/Livian – Dinantian (Carboniferous)
	Molinionian – Dinantian (Carboniferous)
	Tournaisian – Dinantian (Carboniferous)
	Devonian

Faults, Fault Zones	
	Fault
	Fault (uncertain)
	Fault zone
	Fault zone (uncertain)
	Fractured zone

INPEFA	
	Break
	Break (uncertain)
	Break, erosional surface
	Break, erosional surface (uncertain)



LOKSBERGEN (B286)



Sedimentology, Evaporites, Karst	
	Limestone
	Shallow water to continental deposits with paleosoils
	Reworked limestone
	Open marine limestone
	Mud-supported limestone
	Grain-supported shallow water limestone
	Boundstone inter-/subtidal
	Boundstone distal mound
	Marl/Marly limestone
	Claystone/Shale
	Dolostone/Dolomitized limestone
	Silicified carbonate
	Sandstone
	Breccia/Conglomerate
	Possible Karst
	Karst
	Possible Evaporite (or proxy)
	Evaporite (or proxy)

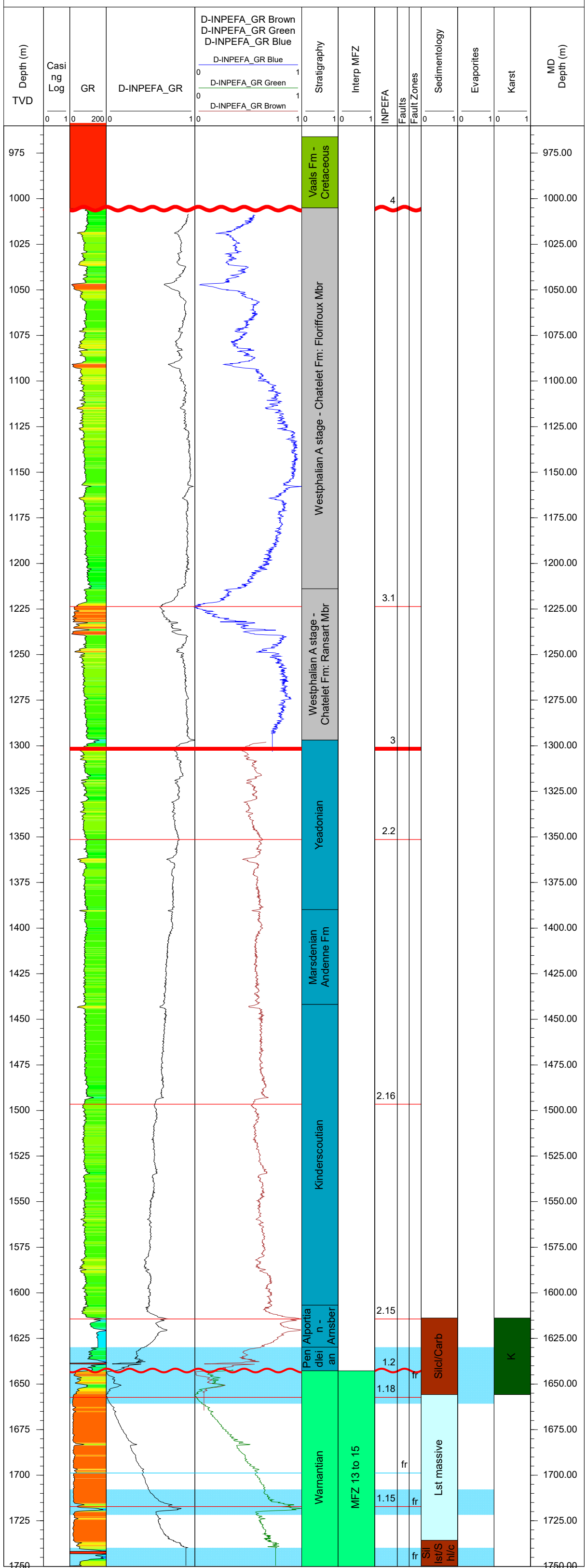
Stratigraphy	
	Cretaceous
	Westphalian (Carboniferous)
	Namurian (Carboniferous)
	Dinantian (Carboniferous)
	Warnantian/Livian – Dinantian (Carboniferous)
	Moliniacian – Dinantian (Carboniferous)
	Tournaisian – Dinantian (Carboniferous)
	Devonian

Faults, Fault Zones	
	Fault
	Fault (uncertain)
	Fault zone
	Fault zone (uncertain)
	Fractured zone

INPEFA	
	Break
	Break (uncertain)
	Break, erosional surface
	Break, erosional surface (uncertain)



MERKSPLAS 1



Sedimentology, Evaporites, Karst	
[Light Blue]	Limestone
[Cyan]	Shallow water to continental deposits with paleosoils
[Dark Blue]	Reworked limestone
[Blue]	Open marine limestone
[Light Blue]	Mud-supported limestone
[Cyan]	Grain-supported shallow water limestone
[Purple]	Boundstone inter-/subtidal
[Dark Purple]	Boundstone distal mound
[Brown]	Marl/Marly limestone
[Dark Brown]	Claystone/Shale
[Yellow]	Dolostone/Dolomitized limestone
[Grey]	Silicified carbonate
[Orange]	Sandstone
[Green]	Breccia/Conglomerate
[Light Green]	Possible Karst
[Dark Green]	Karst
[Pink]	Possible Evaporite (or proxy)
[Red]	Evaporite (or proxy)

Stratigraphy	
[Green]	Cretaceous
[Grey]	Westphalian (Carboniferous)
[Blue]	Namurian (Carboniferous)
[Light Green]	Dinantian (Carboniferous)
[Cyan]	Warnantian/Livian – Dinantian (Carboniferous)
[Green]	Moliniacian – Dinantian (Carboniferous)
[Dark Green]	Tournaisian – Dinantian (Carboniferous)
[Brown]	Devonian

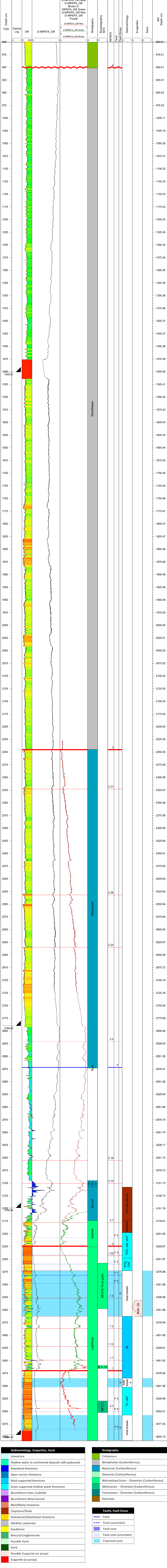
Faults, Fault Zones	
[Blue line]	Fault
[Dashed Blue line]	Fault (uncertain)
[Purple box]	Fault zone
[Light Purple box]	Fault zone (uncertain)
[Light Blue box]	Fractured zone

INPEFA	
[Red line]	Break
[Dashed Red line]	Break (uncertain)
[Red wavy line]	Break, erosional surface
[Red dashed wavy line]	Break, erosional surface (uncertain)



MOL-GT-01-S1

GR log property of VITO



Sedimentology, Evaporites, Karst	
[Light Blue]	Limestone
[Light Green]	Shallow water to continental deposits with paleosoils
[Dark Blue]	Reworked limestone
[Medium Blue]	Open marine limestone
[Light Blue]	Mud-supported limestone
[Cyan]	Grain-supported shallow water limestone
[Purple]	Boundstone inter-/subtidal
[Dark Purple]	Boundstone distal mound
[Brown]	Marl/Marly limestone
[Dark Brown]	Dolostone/Shale
[Yellow]	Dolostone/Dolomitized limestone
[Grey]	Silicified carbonate
[Yellow]	Sandstone
[Green]	Breccia/Conglomerate
[Light Green]	Possible Karst
[Light Green]	Karst
[Pink]	Possible Evaporite (or proxy)
[Red]	Evaporite (or proxy)

INPEFA	
[Red]	Break
[Dashed Red]	Break (uncertain)
[Wavy Red]	Break, erosional surface
[Wavy Dashed Red]	Break, erosional surface (uncertain)

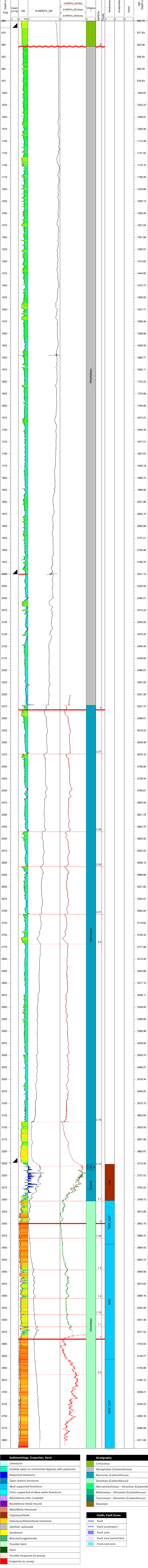
Stratigraphy	
[Green]	Cretaceous
[Grey]	Westphalian (Carboniferous)
[Blue]	Namurian (Carboniferous)
[Light Green]	Dinantian (Carboniferous)
[Dark Green]	Warnantian/Livian – Dinantian (Carboniferous)
[Medium Green]	Molniniacian – Dinantian (Carboniferous)
[Dark Blue]	Tournaisian – Dinantian (Carboniferous)
[Brown]	Devonian

Faults, Fault Zones	
[Blue]	Fault
[Dashed Blue]	Fault (uncertain)
[Dark Blue]	Fault zone
[Light Blue]	Fault zone (uncertain)
[Cyan]	Fractured zone



MOL-GT-02

GR log property of VITO



Sedimentology, Evaporites, Karst	
Light blue	Limestone
Light green	Shallow water to continental deposits with paleosols
Dark blue	Reworked limestone
Blue	Open marine limestone
Cyan	Mud-supported shallow water limestone
Light blue	Grain-supported shallow water limestone
Light purple	Boundstone inter-/subtidal
Dark purple	Boundstone distal mound
Orange	Marl/Marly limestone
Brown	Claystone/Shale
Yellow	Dolostone/Dolomitized limestone
Grey	Silicified carbonate
Yellow	Sandstone
Green	Breccia/Conglomerate
Light green	Possible Karst
Dark green	Karst
Pink	Possible Evaporite (or proxy)
Red	Evaporite (or proxy)

INPEFA	
Red line	Break
Dashed red line	Break (uncertain)
Red wavy line	Break, erosional surface
Dashed red wavy line	Break, erosional surface (uncertain)

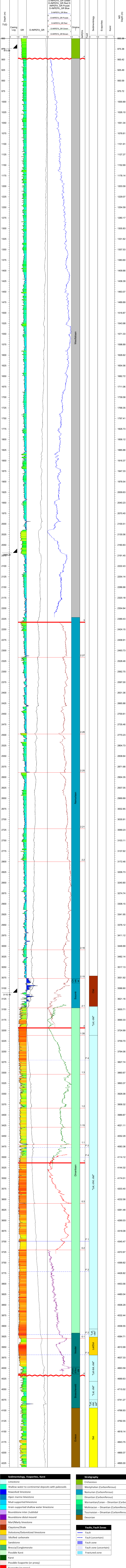
Stratigraphy	
Light green	Cretaceous
Dark green	Westphalian (Carboniferous)
Blue	Namurian (Carboniferous)
Light blue	Dinantian (Carboniferous)
Green	Warnantian/Livian – Dinantian (Carboniferous)
Light green	Molinsian – Dinantian (Carboniferous)
Dark green	Tournaisian – Dinantian (Carboniferous)
Brown	Devonian

Faults, Fault Zones	
Blue line	Fault
Dashed blue line	Fault (uncertain)
Light blue	Fault zone
Light blue	Fault zone (uncertain)
Light blue	Fractured zone



MOL-GT-03-S1

GR log property of VITO



Sedimentology, Evaporites, Karst	
[Light Green]	Limestone
[Light Blue]	Shallow water to continental deposits with paleosols
[Dark Blue]	Reworked limestone
[Medium Blue]	Open marine limestone
[Cyan]	Mud-supported limestone
[Light Cyan]	Grain-supported shallow water limestone
[Purple]	Boundstone inter-/subtidal
[Dark Purple]	Boundstone distal mound
[Brown]	Marl/Marly limestone
[Dark Brown]	Claystone/Shale
[Yellow]	Dolostone/Dolomitized limestone
[Light Yellow]	Silicified carbonate
[Orange]	Sandstone
[Green]	Breccia/Conglomerate
[Light Green]	Possible Karst
[Dark Green]	Karst
[Light Green]	Possible Evaporite (or proxy)
[Red]	Evaporite (or proxy)

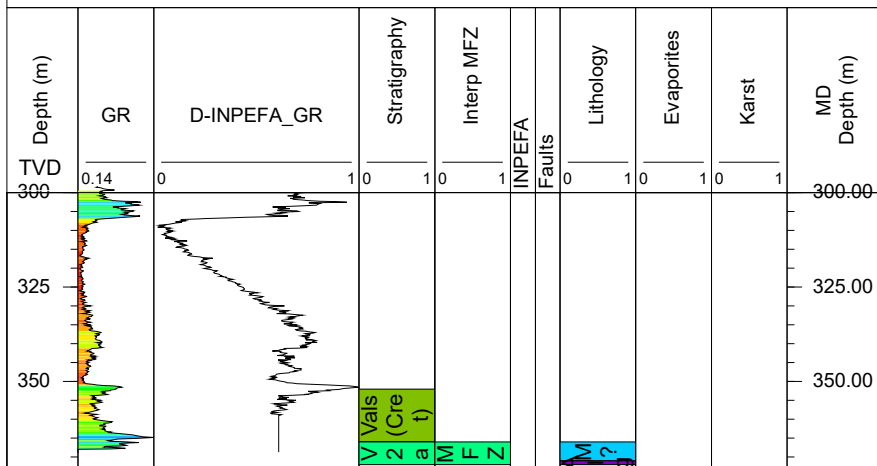
INPEFA	
[Red]	Break
[Dashed Red]	Break (uncertain)
[Red Wavy]	Break, erosional surface
[Red Wavy Dashed]	Break, erosional surface (uncertain)

Stratigraphy	
[Light Green]	Cretaceous
[Green]	Westphalian (Carboniferous)
[Blue]	Namurian (Carboniferous)
[Cyan]	Dinantian (Carboniferous)
[Light Cyan]	Warnantian/Livian – Dinantian (Carboniferous)
[Green]	Molinnian – Dinantian (Carboniferous)
[Dark Green]	Tournaisian – Dinantian (Carboniferous)
[Brown]	Devonian

Faults, Fault Zones	
[Blue]	Fault
[Dashed Blue]	Fault (uncertain)
[Light Blue]	Fault zone
[Dark Blue]	Fault zone (uncertain)
[Light Blue]	Fractured zone



Rillaar (KB-128)



Sedimentology, Evaporites, Karst

Limestone
Shallow water to continental deposits with paleosoils
Reworked limestone
Open marine limestone
Mud-supported limestone
Grain-supported shallow water limestone
Boundstone inter-/subtidal
Boundstone distal mound
Marl/Marly limestone
Claystone/Shale
Dolostone/Dolomitized limestone
Silicified carbonate
Sandstone
Breccia/Conglomerate
Possible Karst
Karst
Possible Evaporite (or proxy)
Evaporite (or proxy)

Stratigraphy

Cretaceous
Westphalian (Carboniferous)
Namurian (Carboniferous)
Dinantian (Carboniferous)
Warnantian/Livian – Dinantian (Carboniferous)
Moliniacian – Dinantian (Carboniferous)
Tournaisian – Dinantian (Carboniferous)
Devonian

Faults, Fault Zones

—	Fault
- - -	Fault (uncertain)
▬	Fault zone
▬	Fault zone (uncertain)
▬	Fractured zone

INPEFA

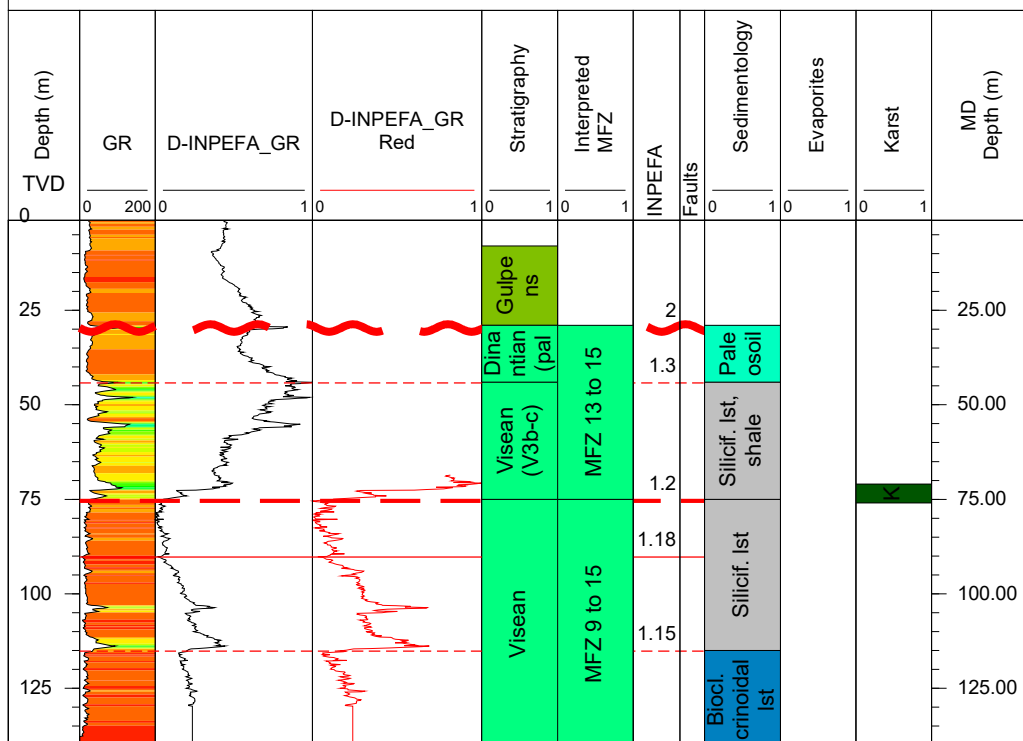
—	Break
- - -	Break (uncertain)
~	Break, erosional surface
~	Break, erosional surface (uncertain)



Vlaanderen
is omgeving

GEOCONSULTANTS
PANterra

's Gravenvoeren (B3175)



Sedimentology, Evaporites, Karst	
	Limestone
	Shallow water to continental deposits with paleosoils
	Reworked limestone
	Open marine limestone
	Mud-supported limestone
	Grain-supported shallow water limestone
	Boundstone inter-/subtidal
	Boundstone distal mound
	Marl/Marly limestone
	Claystone/Shale
	Dolostone/Dolomitized limestone
	Silicified carbonate
	Sandstone
	Breccia/Conglomerate
	Possible Karst
	Karst
	Possible Evaporite (or proxy)
	Evaporite (or proxy)

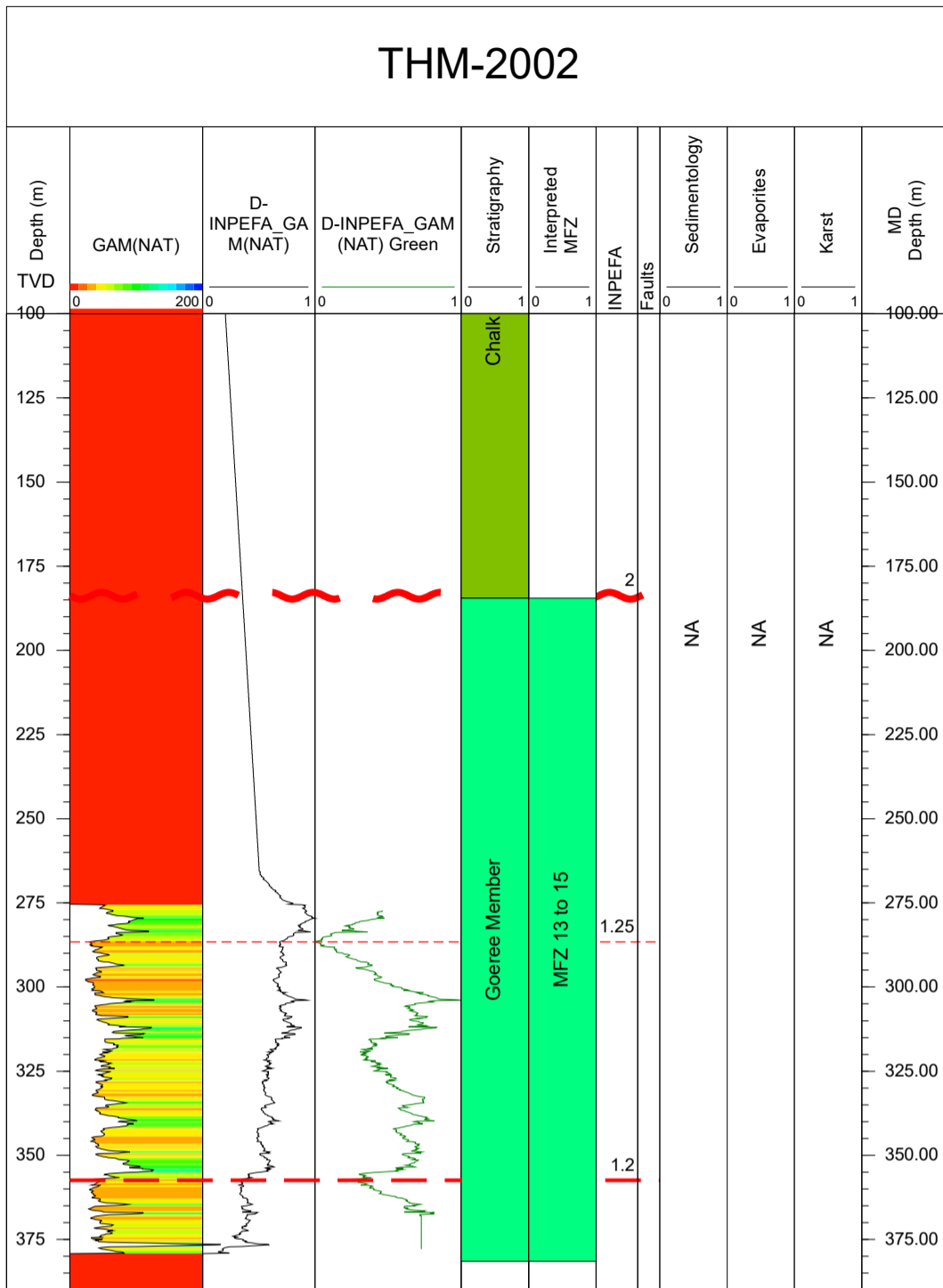
Stratigraphy	
	Cretaceous
	Westphalian (Carboniferous)
	Namurian (Carboniferous)
	Dinantian (Carboniferous)
	Warnantian/Livian – Dinantian (Carboniferous)
	Moliniacian – Dinantian (Carboniferous)
	Tournaisian – Dinantian (Carboniferous)
	Devonian

Faults, Fault Zones	
	Fault
	Fault (uncertain)
	Fault zone
	Fault zone (uncertain)
	Fractured zone

INPEFA	
	Break
	Break (uncertain)
	Break, erosional surface
	Break, erosional surface (uncertain)



THM-2002



Sedimentology, Evaporites, Karst	
	Limestone
	Shallow water to continental deposits with paleosoils
	Reworked limestone
	Open marine limestone
	Mud-supported limestone
	Grain-supported shallow water limestone
	Boundstone inter-/subtidal
	Boundstone distal mound
	Marl/Marly limestone
	Claystone/Shale
	Dolostone/Dolomitized limestone
	Silicified carbonate
	Sandstone
	Breccia/Conglomerate
	Possible Karst
	Karst
	Possible Evaporite (or proxy)
	Evaporite (or proxy)

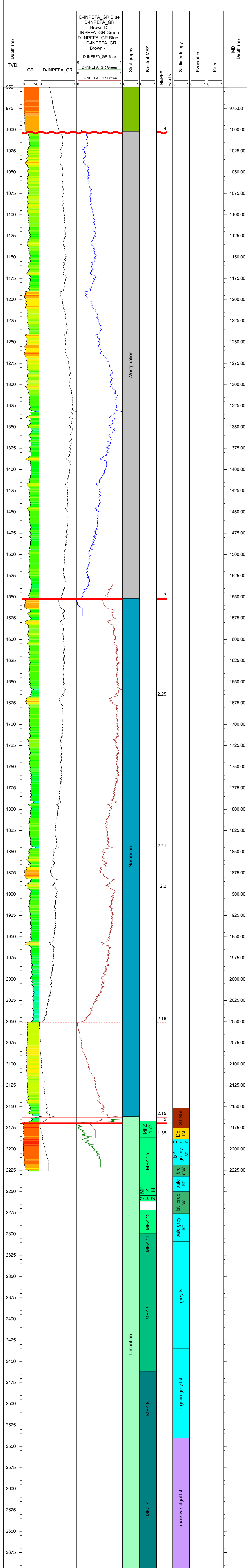
Stratigraphy	
	Cretaceous
	Westphalian (Carboniferous)
	Namurian (Carboniferous)
	Dinantian (Carboniferous)
	Warnantian/Livian – Dinantian (Carboniferous)
	Moliniacian – Dinantian (Carboniferous)
	Tournaisian – Dinantian (Carboniferous)
	Devonian

Faults, Fault Zones	
	Fault
	Fault (uncertain)
	Fault zone
	Fault zone (uncertain)
	Fractured zone

INPEFA	
	Break
	Break (uncertain)
	Break, erosional surface
	Break, erosional surface (uncertain)



TURNHOUT-1

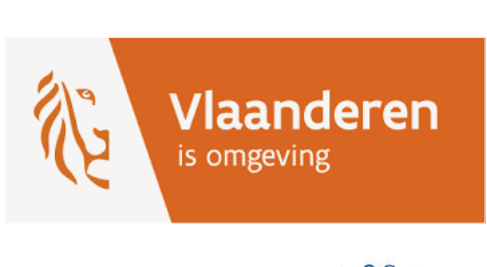


Sedimentology, Evaporites, Karst	
 	Limestone
 	Shallow water to continental deposits with paleosoils
 	Reworked limestone
 	Open marine limestone
 	Mud-supported limestone
 	Grain-supported shallow water limestone
 	Boundstone inter-/subtidal
 	Boundstone distal mound
 	Marl/Marly limestone
 	Claystone/Shale
 	Dolostone/Dolomitized limestone
 	Silicified carbonate
 	Sandstone
 	Breccia/Conglomerate
 	Possible Karst
 	Karst
 	Possible Evaporite (or proxy)
 	Evaporite (or proxy)

Stratigraphy	
 	Cretaceous
 	Westphalian (Carboniferous)
 	Namurian (Carboniferous)
 	Dinantian (Carboniferous)
 	Warnantian/Livian – Dinantian (Carboniferous)
 	Molinnian – Dinantian (Carboniferous)
 	Tournaisian – Dinantian (Carboniferous)
 	Devonian

Faults, Fault Zones	
—	Fault
- - -	Fault (uncertain)
 	Fault zone
 	Fault zone (uncertain)
 	Fractured zone

INPEFA	
—	Break
- - -	Break (uncertain)
~	Break, erosional surface
~	Break, erosional surface (uncertain)



Vlaanderen
is omgeving



GEOCONTOLOGIE
STAKEN